

先

S E N T O O C O L L E C T I O N

頭



## SENTOO LOTUS

Sentoo Lotus is the latest range to be added to the Sentoo collection; a range of stunning synthetic fibre wigs with various crafted foundations and cap sizes.

The designers of the Sentoo Lotus collection have produced an impeccable line of wigs with machine wefting, lace fronts & anti slip PU areas. All bases have been designed by a highly skilled team with one aim in mind; stylish, comfortable and natural looking wigs to suit all ages.

The Sentoo Lotus collection blossoms for the perfect fit & exquisite comfort for every wearer.

- Available In Various Cap Sizes
- As Light As A Feather
- Natural Colours
- Lace Front
- Monofilament Bases
- Extreme Comfort

For information on the Lotus bases please refer to the Lotus Base Chart.

### LOTUS BASE CHART



Machine wefting on a stretch net with a monofilament top & lace front



Machine wefting on a stretch net, a hand tied top that feels delicate and soft on the scalp with anti-slip tabs & a lace front



Nape machine wefting covered by a soft-touch fabric, a hand-tied base on a stretch net with a monofilament top, lace front and PU tabs for extra comfort and support



Nape machine wefting covered by a soft-touch fabric, with a hand-tied, finer-seamed base, on a lighter-weight stretch net; a Monofilament Top, extended lace front and PU tabs for extra comfort and support

LOTUS

BY SENTOO COLLECTION

## ASTER Oak Melange



FRONT 10cm

CROWN 26cm

NAPE 10cm

CAP SIZE 53cm

### BLONDES

Red Chestnut Rooted **NEW**

Sycamore Melange Rooted **NEW**

Zebra Wood Rooted **NEW**

Lotus Silver

Lotus Iced Melange

Lotus Midnight

Cherry Rooted

Sandalwood Rooted

Cherry Melange

Maple Melange

Smokey Melange

Walnut Melange

Sandalwood Melange

Oak Melange Rooted

Light Oak Melange Rooted







BLOSSOM  
Smokey Melange

- FRONT 5cm
- CROWN 10cm
- NAPE 5cm
- CAP SIZE 55cm

COLOURS

- Red Chestnut Rooted **NEW**
- Sycamore Melange Rooted **NEW**
- Zebra Wood Rooted **NEW**
- Lotus Silver
- Lotus Iced Melange
- Lotus Midnight
- Cherry Rooted
- Sandalwood Rooted
- Cherry Melange
- Maple Melange
- Smokey Melange
- Walnut Melange
- Sandalwood Melange
- Oak Melange Rooted
- Light Oak Melange Rooted



LOTUS

BY SENTOO COLLECTION



LOTUS

BY SENTOO COLLECTION



BLUEBELL  
Red Chestnut Rooted

- FRONT 38cm
- CROWN 48cm
- NAPE 33cm
- FRINGE 17cm
- CAP SIZE 53cm

COLOURS

- Red Chestnut Rooted **NEW**
- Sycamore Melange Rooted **NEW**
- Zebra Wood Rooted **NEW**
- Lotus Midnight
- Cherry Rooted
- Sandalwood Rooted
- Cherry Melange
- Maple Melange
- Walnut Melange
- Sandalwood Melange
- Oak Melange Rooted
- Light Oak Melange Rooted





# DAHLIA

Sandalwood Rooted

- FRONT 8cm
- CROWN 10cm
- NAPE 5cm
- CAP SIZE 54cm

COLOURS

- Red Chestnut Rooted **NEW**
- Sycamore Melange Rooted **NEW**
- Zebra Wood Rooted **NEW**
- Lotus Silver
- Lotus Iced Melange
- Lotus Midnight
- Cherry Rooted
- Sandalwood Rooted
- Cherry Melange
- Maple Melange
- Smokey Melange
- Walnut Melange
- Sandalwood Melange
- Oak Melange Rooted
- Light Oak Melange Rooted



LOTUS  
BY SENTOO COLLECTION



# HAZEL

Oak Melange Rooted

- FRONT 13cm
- CROWN 25cm
- NAPE 15cm
- CAP SIZE 53cm

COLOURS

- Red Chestnut Rooted **NEW**
- Sycamore Melange Rooted **NEW**
- Zebra Wood Rooted **NEW**
- Lotus Silver
- Lotus Iced Melange
- Lotus Midnight
- Cherry Rooted
- Sandalwood Rooted
- Cherry Melange
- Maple Melange
- Smokey Melange
- Walnut Melange
- Sandalwood Melange
- Oak Melange Rooted
- Light Oak Melange Rooted

LOTUS  
BY SENTOO COLLECTION







# IRIS

## Sugar Berry

- FRONT 20cm
- CROWN 22cm
- NAPE 6.5cm
- CAP SIZE 53cm

### COLOURS

- Red Chestnut Rooted **NEW**
- Sycamore Melange Rooted **NEW**
- Zebra Wood Rooted **NEW**
- Sugar Berry **NEW**
- Lotus Iced Melange
- Lotus Midnight
- Cherry Rooted
- Sandalwood Rooted
- Cherry Melange
- Maple Melange
- Walnut Melange
- Sandalwood Melange
- Oak Melange Rooted
- Light Oak Melange Rooted



LOTUS

BY SENTOO COLLECTION



LOTUS

BY SENTOO COLLECTION



# JASMINE

## Lotus Midnight

- FRONT 13cm
- CROWN 22cm
- NAPE 6cm
- CAP SIZE 51.5cm

### COLOURS

- Red Chestnut Rooted **NEW**
- Sycamore Melange Rooted **NEW**
- Zebra Wood Rooted **NEW**
- Sugar Berry **NEW**
- Lotus Silver
- Lotus Iced Melange
- Lotus Midnight
- Cherry Rooted
- Sandalwood Rooted
- Cherry Melange
- Maple Melange
- Smokey Melange
- Walnut Melange
- Sandalwood Melange
- Oak Melange Rooted
- Light Oak Melange Rooted





LILY  
Lotus iced Melange

- FRONT 13cm
- CROWN 17cm
- NAPE 10cm
- CAP SIZE 53cm

COLOURS

- Red Chestnut Rooted **NEW**
- Sycamore Melange Rooted **NEW**
- Zebra Wood Rooted **NEW**
- Lotus Silver
- Lotus Iced Melange
- Lotus Midnight
- Cherry Rooted
- Sandalwood Rooted
- Cherry Melange
- Maple Melange
- Smokey Melange
- Walnut Melange
- Sandalwood Melange
- Oak Melange Rooted
- Light Oak Melange Rooted



LOTUS

BY SENTOO COLLECTION



LOTUS

BY SENTOO COLLECTION



PEONY  
Light Oak Melange

- FRONT 11cm
- CROWN 7cm
- NAPE 5cm
- CAP SIZE 53cm

COLOURS

- Red Chestnut Rooted **NEW**
- Sycamore Melange Rooted **NEW**
- Zebra Wood Rooted **NEW**
- Lotus Silver
- Lotus Iced Melange
- Lotus Midnight
- Cherry Rooted
- Sandalwood Rooted
- Cherry Melange
- Maple Melange
- Smokey Melange
- Walnut Melange
- Sandalwood Melange
- Oak Melange Rooted
- Light Oak Melange Rooted





# POPPY

Sycamore Melange Rooted

- FRONT 32cm
- CROWN 36cm
- NAPE 36cm
- CAP SIZE 53cm

## COLOURS

- Red Chestnut Rooted **NEW**
- Sycamore Melange Rooted **NEW**
- Zebra Wood Rooted **NEW**
- Sugar Berry **NEW**
- Lotus Midnight
- Cherry Rooted
- Sandalwood Rooted
- Cherry Melange
- Maple Melange
- Walnut Melange
- Sandalwood Melange
- Oak Melange Rooted
- Light Oak Melange Rooted



LOTUS

BY SENTOO COLLECTION



# TULIP

Zebra Wood Rooted

- FRONT 9cm
- CROWN 12.5cm
- NAPE 8cm
- CAP SIZE 53cm

## COLOURS

- Red Chestnut Rooted **NEW**
- Sycamore Melange Rooted **NEW**
- Zebra Wood Rooted **NEW**
- Lotus Silver
- Lotus Ices Melange
- Lotus Midnight
- Cherry Rooted
- Sandalwood Rooted
- Cherry Melange
- Maple Melange
- Smokey Melange
- Walnut Melange
- Sandalwood Melange
- Oak Melange Rooted
- Light Oak Melange Rooted

LOTUS

BY SENTOO COLLECTION





# SENTOO LOTUS COLOURS

Please refer to individual item pages for information on the colours available.



**Please note:** Colours may not be a full representation on this chart. We recommend you purchase a Sentoo Lotus colour swatch ring to match your perfect colour. When receiving your Sentoo Lotus wig, only the numbered colour code will appear on the product tag.



# SENTOO PREMIUM

A range of beautifully crafted synthetic fibre wigs. Sentoo Premium is the founding range from the Sentoo collection and has provided the benchmark for all future ranges. The Sentoo Premium collection aims at enabling wearers of any age to feel comfortable all day long. It is designed for those wishing for a natural look with easy to wear comfort and a base suited to those with a sensitive scalp.



The unique cap construction has a specialised monofilament top and a delicate lace front to frame the face and create an invisible hairline.

- As Light As A Feather
- Hand-Tied
- Monofilament
- Invisible Lace Front
- Soft Velvety Feel
- Natural Colours

Please note all caps are 53.5cm in size unless otherwise stated.



AKARI  
132

FRONT	10cm
CROWN	7-9cm
NAPE	6cm

BLONDES		
S770	223	769
134	713	A791G
	18/22R	

BROWNS	
4/6	728T

REDS	
740N	S637

GREYS		
60	56/60	132
600	56	49
	38	



PREMIUM

BY SENTOO COLLECTION



PREMIUM

BY SENTOO COLLECTION

AYA  
740N

FRONT	6.5cm
CROWN	5cm
NAPE	5cm

BLONDES		
S770	713	769
223	18/22R	

BROWNS	
	S12/10

REDS	
740N	131

GREYS		
60	56/60	38
600	56	49





KASUMI  
769

FRONT 11.5cm

CROWN 9.5cm

NAPE 6.5cm

BLONDES

S770      223      769  
18/22R

BROWNS

2/4      S12/10      A761G  
8/10-20G

REDS

131

GREYS

60      56/60      49  
600      56      135



PREMIUM

BY SENTOO COLLECTION



PREMIUM

BY SENTOO COLLECTION



KINU  
S637

FRONT 14cm

CROWN 15cm

NAPE 4cm

BLONDES

S770      A791G      A757G

BROWNS

4/6

REDS

S637

GREYS

60      600      436  
49





KYU  
38

FRONT	10cm
CROWN	10cm
NAPE	5cm

BLONDES		
S770	223	769
20/22	713	A791G
134	18/22R	

BROWNS		
4/6	8	728T
	S12/10	

REDS		
	131	

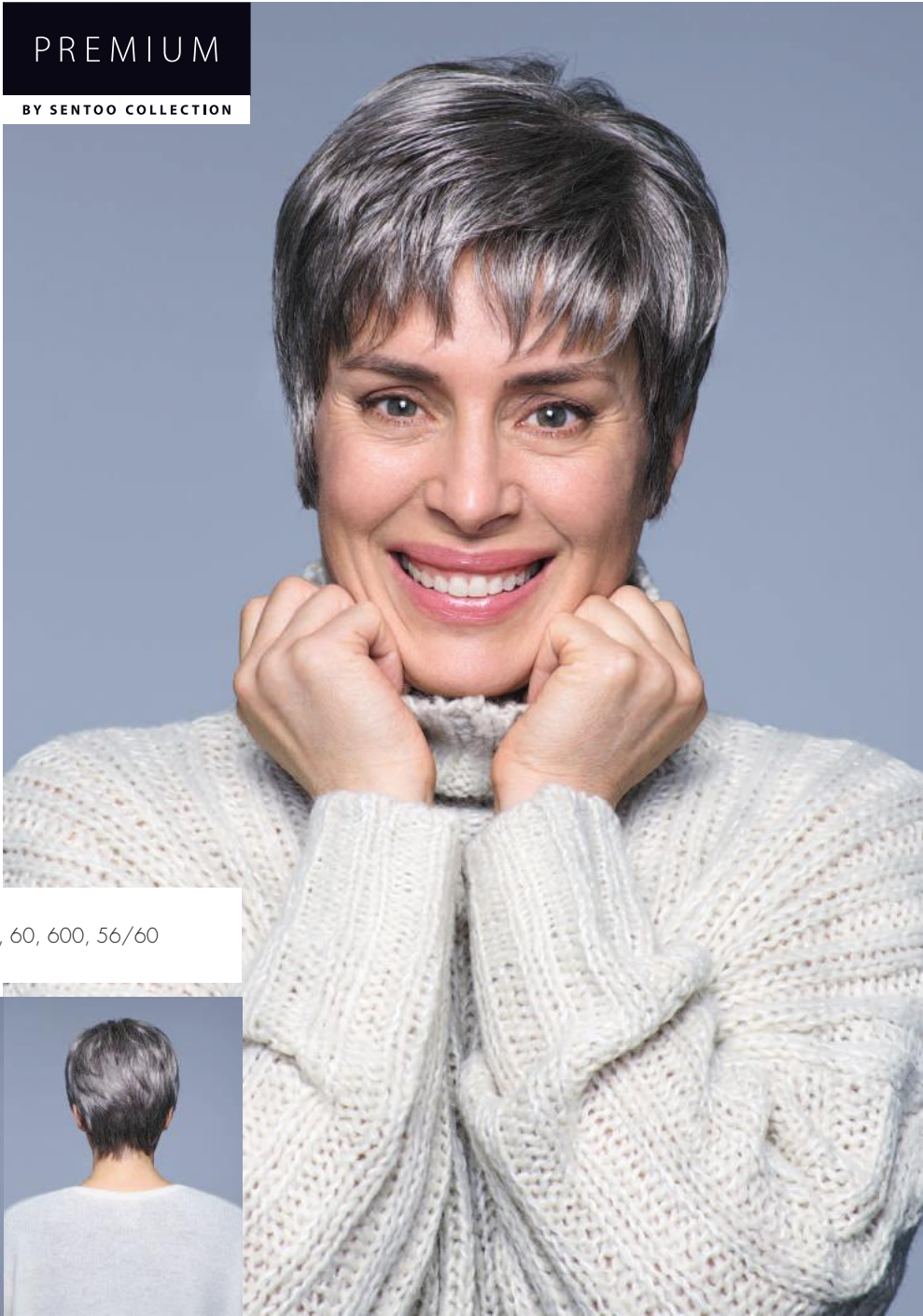
GREYS		
60	56	49
600	38	436
56/60	132	S456

Available in Petite (51cm) & Large (55cm) caps.  
Petite Cap available in S770, 18/22R, S12/10, 60, 600, 56/60  
Large Cap available in 18/22R, 56/60



PREMIUM

BY SENTOO COLLECTION



PREMIUM

BY SENTOO COLLECTION



MAIKO  
713

FRONT	6cm
CROWN	6cm
NAPE	6cm

BLONDES		
S770	223	18/22R
20/22	713	769

BROWNS		
2/4	8/10-20G	

REDS		
	740N	

GREYS		
60	56/60	49
600	56	436
	38	

Available in Petite (51cm) & Large (55cm) caps.  
Petite Cap available in S770, 18/22R, 769, S12/10, 60, 56/60, 56, 49  
Large Cap available in 18/22R, S12/10, 56/60





MITSU  
728T

FRONT	11cm
CROWN	13cm
NAPE	7cm

BLONDES		
713	18/22R	769
BROWNS		
8	728T	
REDS		
767	740N	829
GREYS		
60	56/60	135
600	49	



PREMIUM  
BY SENTOO COLLECTION

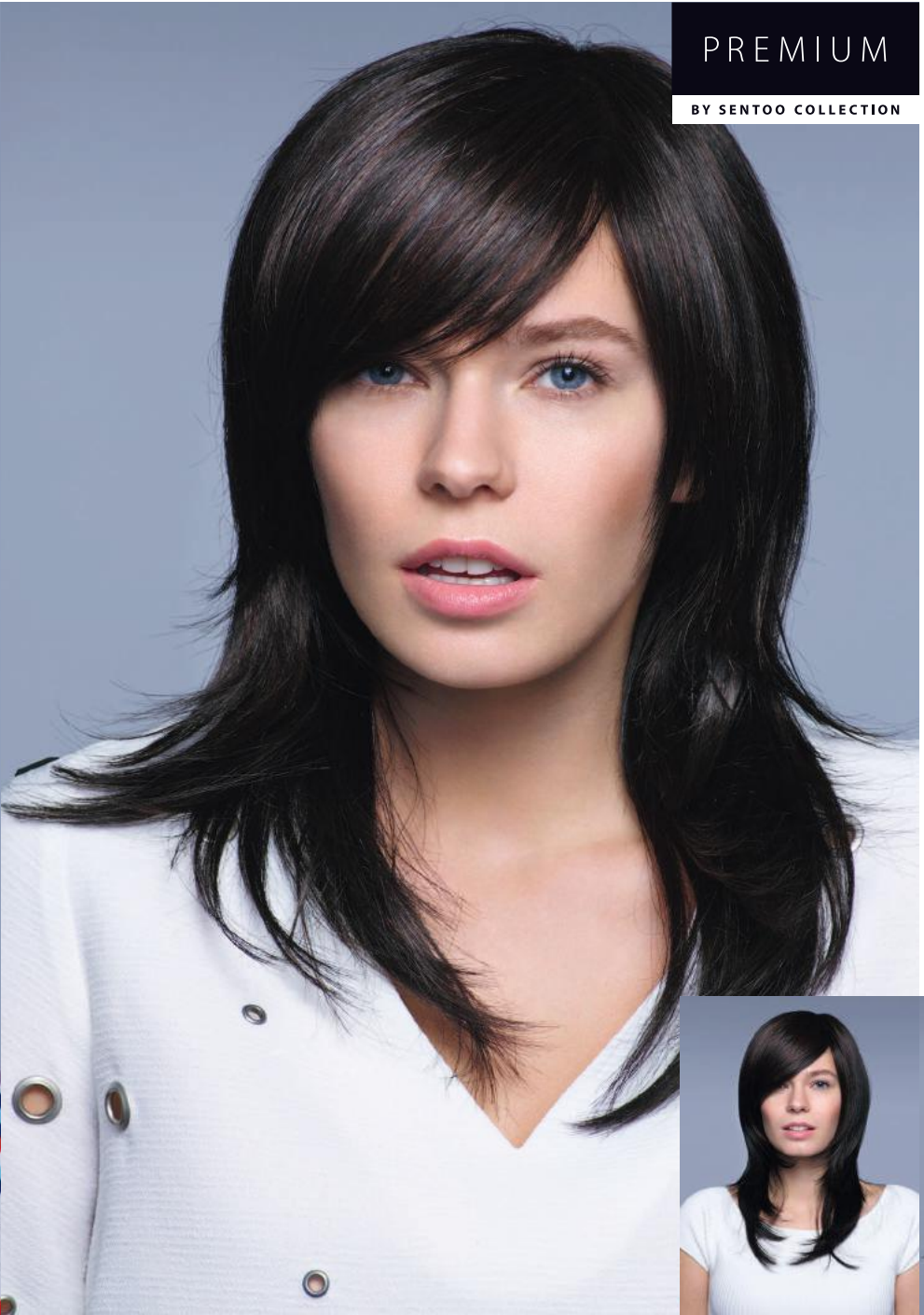


MYU  
4/6

FRONT	19cm
CROWN	23cm
NAPE	19cm

BLONDES		
S770	223	18/22R
BROWNS		
2/4	4/6	728T
	S12/10	
REDS		
S637	131	

PREMIUM  
BY SENTOO COLLECTION





# SAKURA LONG

S770

FRONT	21cm
CROWN	45cm
NAPE	45cm

BLONDES		
S770	223	A791G
20/22	769	A757G

BROWNS		
2/4	8	8/10-20G
4/6	S12/10	

REDS	
740N	S637



PREMIUM

BY SENTOO COLLECTION



# SANGO

A757G

FRONT	10cm
CROWN	33cm
NAPE	17cm

BLONDES		
S770	223	769
20/22	713	A791G
134	18/22R	A757G

BROWNS		
4/6	S12/10	A761G
	8/10-20G	

REDS	
740N	S673

PREMIUM

BY SENTOO COLLECTION





SORA  
637

FRONT 7.5cm

CROWN 19cm

NAPE 7cm

BLONDES

S770	223	769
20/22	713	A791G
134	18/22R	A757G

BROWNS

4/6	8	A761G
	S12/10	

REDS

740N	S637
------	------

GREYS

56/60
-------

Available in Petite (51cm) & Large (55cm) caps.  
Petite Cap available in S770, 713, 8, S12/10, S637, 56/60  
Large Cap available in 713, 8, S637



PREMIUM

BY SENTOO COLLECTION



PREMIUM

BY SENTOO COLLECTION



TAMAKI  
A757G

FRONT 10.5cm

CROWN 18cm

NAPE 6cm

BLONDES

S770	134	18/22R
20/22	713	A757G

BROWNS

S12/10	A761G
--------	-------

GREYS

60	600	56/60
----	-----	-------





TANI  
600

FRONT 9.5cm

CROWN 9.5cm

NAPE 6cm

BLONDES

S770	713	769
223	18/22R	A757G

BROWNS

8/10-20G

REDS

S731	829
------	-----

GREYS

60	56	49
600	38	436
56/60	132	S456



PREMIUM

BY SENTOO COLLECTION



YAMA  
829

FRONT 10cm

CROWN 13cm

NAPE 10cm

BLONDES

S770	713	769
	18/22R	

REDS

829

GREYS

60	600	38
	56/60	

PREMIUM

BY SENTOO COLLECTION





# SENTOO PREMIUM COLOURS

## BLONDES



## BROWNS



**Please note:** Colours may not be a full representation on this chart. We recommend you purchase a Sentoo Premium colour swatch ring to match your perfect colour. When receiving your Sentoo Premium wig, only the numbered colour code will appear on the product tag.



## REDS



## GREYS





S

# SENTOO LOTUS & PREMIUM AFTERCARE

**WASHING:** Cleanse your Sentoo Lotus or Premium wig in tepid water with T-Range fibre shampoo.

*Tip* – Prior to washing, gently brush through the hair to remove any knots/tangles.

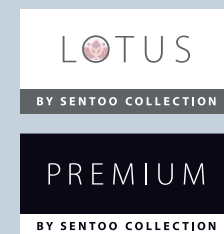
**CONDITIONING:** After rinsing off the shampoo, gently smooth through some T-Range Softening Conditioner to help condition the fibre hair. Rinse conditioner out.

*Tip* – For a more intensive condition, soak the wig in a bowl of tepid water with a capful of T-Range Softening Conditioner for 10 – 20 mins, rinse with clear water to remove the conditioner.

**DRYING:** Gently blot the excess water out of your Sentoo Lotus or Premium wig with a towel (do not rub or twist). Shake the wig and leave to dry naturally on a polyhead or wig stand.

If worn daily, wash every 10–14 days otherwise once a month should be sufficient.

To get the most out of your Sentoo Lotus or Premium wig, spray the fibre hair lightly with T-Range Soft N Sheen or Sentoo Leave In Conditioner spray. Gently remove any knots and tangles with your fingers before and after wearing.



## IMPORTANT NOTES

- Avoid exposure to heat such as hair dryers, curling irons, hot rollers, ovens, gas heaters etc. Avoid opening ovens and standing under overhead heaters whilst wearing your fibre wig!
- Never wash in hot water!
- The continual wearing of a fibre wig will result in Friction Frizz especially if your wig is collar length or longer.
- Fibre wigs need to be replaced more frequently than human hair wigs. The expected lifespan for a short fibre wig is 4-6 months, a mid length wig is between 3-4 months and a long wig is 2-3 months. Please note, these are approximate time frames and are based on every day wear and how you maintain and care for the wig.
- Fibre hair wigs can NEVER be coloured or bleached.



# SENTOO PREMIUM PLUS

An innovative addition to the Sentoo collection, Sentoo Premium Plus is a range of supreme quality styles crafted with "Flexi-Fibre"; a high heat fibre which allows the wearer to heat style for a perfectly flawless finish.

A Sentoo Premium Plus wig is easy to maintain and offers superior flexible styling to keep the wearer one step ahead. Flexi-Fibre can be blow-dried, curled or straightened using temperature controlled stylers (Maximum 140°).



The unique cap construction has a specialised monofilament top, a delicate lace front to frame the face and to create an invisible hairline. Anti-slip PU strips have been added for extra security and comfort for the wearer.

- As Light As A Feather
- Hand-Tied
- Monofilament
- Invisible Lace Front
- Soft Velvety Feel
- Natural Colours



Please note all caps are 53.5cm in size unless otherwise stated.



104  
122+226

FRONT	10cm
CROWN	12cm
NAPE	8cm

BLONDES		
155A	122+226	169
153	170	

BROWNS	
115	116

REDS		
129	135	133
136	143	

Available in Petite (51cm) & Large (55cm) caps.  
Large Cap available in 50/88T, 27/8GT, 122+226, 115, 116, 168T, 143  
Petite Cap available in 115, 168T, 136, 135



PREMIUM  
PLUS  
BY SENTOO COLLECTION



105  
18/23

FRONT	13cm
CROWN	16.5cm
NAPE	15cm

BLONDES		
155A	18/23	27/8GT
153	236	245

BROWNS	
115	

REDS		
129	135	143

GREYS	
600	

PREMIUM  
PLUS  
BY SENTOO COLLECTION





106  
536

FRONT	9cm
CROWN	8-10cm
NAPE	3-4cm

BLONDES		
155A	154	169
153	170	

BROWNS	
118WH	116

REDS		
129	136	135

GREYS		
56/60	92	536



PREMIUM  
PLUS  
BY SENTOO COLLECTION



107  
536

FRONT	7-11cm
CROWN	16.5cm
NAPE	5-6cm

BLONDES		
154	236	245

BROWNS		
118WH	116	168T

REDS		
135	143	133

GREYS	
600	92

PREMIUM  
PLUS  
BY SENTOO COLLECTION





204  
135

FRONT	14cm
CROWN	20cm
NAPE	22cm

BLONDES		
1555A	18/23	170
153	236	245
50/88T	27/8GT	

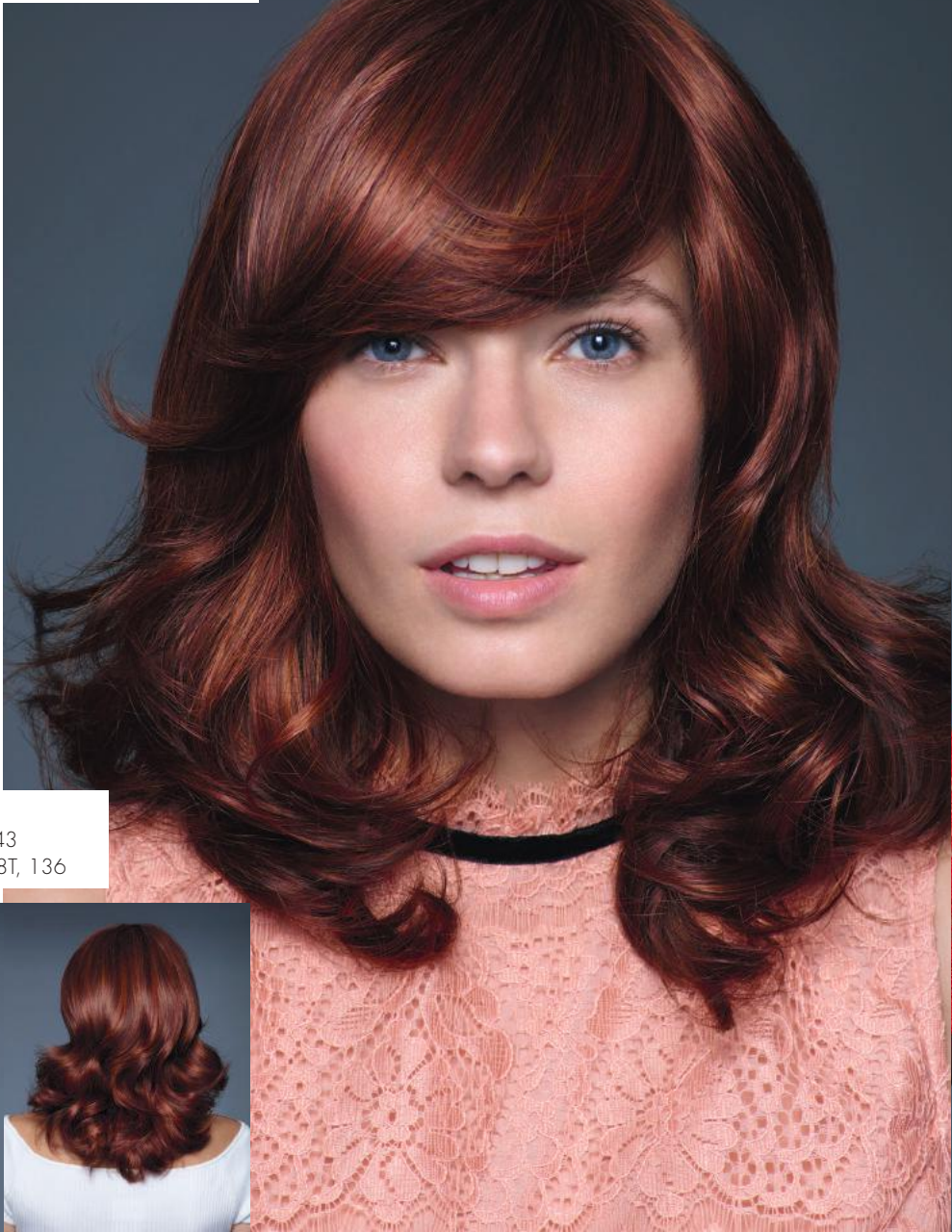
BROWNS		
115	116	168T

REDS		
129	136	143
	135	

Available in Petite (51cm) & Large (55cm) caps.  
Large Cap available in 236, 170, 169, 168T, 143  
Petite Cap available in 236, 122+226, 115, 168T, 136



PREMIUM PLUS  
BY SENTOO COLLECTION



205  
116

FRONT	12-16cm
CROWN	9cm
NAPE	7cm

BLONDES	
155A	18/23

BROWNS		
115	118WH	116

REDS	
129	143

PREMIUM PLUS  
BY SENTOO COLLECTION





302  
136

FRONT 14cm

CROWN 19cm

NAPE 7cm

BLONDES

155A	154	122+226
153	18/23	169
	236	

BROWNS

115	118WH	116
-----	-------	-----

REDS

129	136	143
130	135	

GREYS

600

Available in Petite (51cm) & Large (55cm) caps.  
Petite Cap available in 153, 154, 236, 115, 136  
Large Cap available in 245, 115, 168T



PREMIUM  
PLUS

BY SENTOO COLLECTION



PREMIUM  
PLUS

BY SENTOO COLLECTION

305  
143

FRONT 10cm

CROWN 12cm

NAPE 8cm

BLONDES

155A	236	169
50/88T	27/8GT	

BROWNS

168T

REDS

129	136	143
	135	

GREYS

56/60





402  
135

FRONT 13cm

CROWN 20cm

NAPE 17cm

BLONDES

153	236	169
154	27/8GT	245
18/23	122+226	

BROWNS

115	118WH
-----	-------

REDS

135	143
-----	-----

PREMIUM  
PLUS

BY SENTOO COLLECTION



502A  
236

FRONT 20cm

CROWN 34cm

NAPE 38cm

BLONDES

155A	50/88T	122+226
153	154	169
	236	

BROWNS

115	118WH
-----	-------

REDS

129	135	143
-----	-----	-----

PREMIUM  
PLUS

BY SENTOO COLLECTION





# SENTOO PREMIUM PLUS COLOURS

## BLONDES



## BROWNS



## REDS



## GREYS



**Please note:** Colours may not be a full representation on this chart. We recommend you purchase a Sentoo Premium Plus colour swatch ring to match your perfect colour. When receiving your Sentoo Premium Plus wig, only the numbered colour code will appear on the product tag.





# SENTOO PREMIUM PLUS AFTERCARE

**WASHING:** Cleanse your Sentoo Premium Plus wig in tepid water with Cyber Revitalise Wash shampoo.

*Tip* – Prior to washing, gently brush through the hair to remove any knots/tangles.

**CONDITIONING:** After rinsing off the shampoo, gently smooth through some Cyber Detangling Cream conditioner to help condition the Flexi-Fibre hair. Rinse off conditioner.

*Tip* – For a more intensive condition, soak the wig in a bowl of tepid water with a capful of Cyber Intensive Conditioner for 10 – 20 mins, rinse with clear water to remove the conditioner.

**DRYING:** Gently blot the excess water out of your Sentoo Premium Plus wig with a towel (do not rub or twist). Shake the wig and leave to dry naturally or blow dry with a low gentle heat.

To keep your Flexi-Fibre wig moisturised, use a light spritz of Trendco Moisture Protection spray before & after wear.



**STYLING:** Sentoo Premium Plus are Flexi-Fibre hair, which means that the hair is durable for some heat styling. They can be blow-dried, straightened or curled for complete flexibility. Special styling products are available just for Flexi-Fibre hair, please ask your stylist to recommend the correct styling products for you.

**PLEASE NOTE:** Heat stylers must be temperature controlled (maximum 140°), using higher than recommended heat will result in permanent damage to the fibre. When blow-drying, use a low heat. If a Sentoo Premium Plus wig is straightened, it becomes very stubborn and may result in permanent straightness.

Aderans Straightening Irons are the perfect styling accessory for your Sentoo Premium Plus wig. They have a temperature gauge between 80°-220°, ceramic plates, 30 minute sleep mode and comes with a heat mat and travel pouch.

Aderans Hairdryer is the ideal styling tool for your Sentoo Premium Plus wig. The weight, size & shape is perfect for your styling needs. It has two temperatures (45°C and 90°C) to maintain the protection of the Flexi-Fibre as well as being lightweight.



PREMIUM  
PLUS  
BY SENTOO COLLECTION

## Flexi-Fibre advice and top tips!

- If worn daily, wash at least every 7 days.
- When brushing, use a brush with metal prongs. Plastic brushes cause the Flexi-Fibre to become static.
- Avoid opening ovens and standing under overhead heaters whilst wearing a Flexi-Fibre wig.
- Please note that continual wearing of a Flexi-Fibre wig will result in the Flexi-Fibre frizzing, especially if your wig is collar length or longer. This is called Friction Frizz.
- All Flexi-Fibre wigs need to be replaced more frequently than human hair wigs. The expected lifespan for a short Flexi-Fibre wig is 4-6 months, a mid length (or bob) wig is between 3-4 months and a long wig is 2-3 months; these time frames are approximate and are based on every day wear and how you maintain and care for the wig.
- Flexi-Fibre cannot be coloured or bleached.







CREATING HEADLINES WORLDWIDE

**Aderans**

**Head Office & Mail Order**

Sheridan House  
114-116 Western Road  
Hove BN3 1DD  
Tel: 01273 774 977  
Email: [info@trendco.co.uk](mailto:info@trendco.co.uk)

**Trendco Birmingham**

13 Cannon Street  
Birmingham B2 5EN  
Tel: 0121 633 4280  
Email: [birmingham@trendco.co.uk](mailto:birmingham@trendco.co.uk)

**Trendco Edinburgh (A&A Studios)**

8-10 Tanfield, Inverleith  
Edinburgh  
EH3 5HF  
Tel: 0131 556 7057  
Email: [edinburgh@trendco.co.uk](mailto:edinburgh@trendco.co.uk)

**Trendco Hove**

Sheridan House Ground Floor  
114-116 Western Road  
Hove BN3 1DD  
Tel: 01273 778 516  
Email: [hove@trendco.co.uk](mailto:hove@trendco.co.uk)

**Trendco Liverpool**

(The Wiggins)  
119 Penny Lane  
Liverpool L18 1DF  
Tel: 0151 733 5826  
Email: [liverpool@trendco.co.uk](mailto:liverpool@trendco.co.uk)

**Trendco London**

64 Westbourne Grove  
London W2 5SH  
Tel: 0207 221 2646  
Email: [london@trendco.co.uk](mailto:london@trendco.co.uk)

**Trendco Manchester**

Lloyds House  
18 Lloyd Street  
Manchester M2 5WA  
Tel: 0161 834 6151  
Email: [manchester@trendco.co.uk](mailto:manchester@trendco.co.uk)

**Trendco Nottingham**

Suite 1A, The Hub  
40 Friar Lane  
Nottingham NG1 6DQ  
Tel: 0115 947 5316  
Email: [nottingham@trendco.co.uk](mailto:nottingham@trendco.co.uk)

Website: [www.trendco.co.uk](http://www.trendco.co.uk)  
Like us on Facebook - Trendco Wigs  
Follow us on Twitter - @Trendcowigs  
Follow us on Instagram - @Trendcowigs