



# RAQUEL

RAQUEL WELCH SPRING & FALL

2020 SIGNATURE WIG COLLECTION





Pictured from left to right: High Octane in RL14/22SS,  
In Charge in RL29/25, Flirting With Fashion in RL11/25,  
In Charge in RL4/10SS





IT'S SO **YOU!**



RAQUEL WELCH 2020

# SIGNATURE

WIG COLLECTION

Our 2020 wig collection—  
it's all about the styles  
you're looking for today. The  
loosened up and lightened  
up. The easygoing and  
always comfortable. Three  
beautiful new Fall wigs to  
complement our Spring trio  
for a year of looks that are  
ready to wear, ready to wow.  
A great hair day every day...



# YOU run this show.



Front, sides and back above shown in RL14/25SS.

Suitable for Oval, Round, Diamond, Pear and Oblong shaped faces.

**HEAD SIZE:** Average

**HAIR LENGTHS:** Front: 7¾", Crown: 7", Sides: 6½", Back: 6½",  
Nape: 3", Weight: 4.1 oz.

**AVAILABLE SHADES:** RL2/4, RL4/6, RL5/27, RL6/8, RL6/28, RL6/30, RL8/29,  
RL10/12, RL11/25, RL12/16, RL13/88, RL14/22, RL14/25, RL16/88, RL19/23,  
RL29/25, RL30/27, RL31/29, RL32/31, RL33/35, RL51/61, RL56/60, RL119

**SHADOW SHADES:** RL4/10SS, RL8/12SS, RL8/29SS, RL9/24SS, RL10/22SS,  
RL12/22SS, RL14/22SS, RL14/25SS, RL16/21SS, RL17/23SS, RL19/23SS,  
RL29/33SS, RL613SS

---

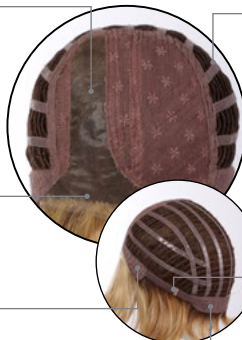
## TEMPLE-TO-TEMPLE LACE FRONT MONOFILAMENT PART with Memory Cap® III Base

Monofilament part  
with fibers that are  
individually hand-tied,  
one by one, in a wide  
strip for parting options

Sheer temple-to-  
temple lace front  
for natural looking  
off-the-face styling

Velvet-lined ear tabs

Velvet-lined extended nape



Patented  
Memory Cap III  
construction with  
silicone coated  
stretch lace that  
molds to the  
shape of the head  
for a custom-  
like fit

Ultra-thin adjusters  
at the nape for a  
personalized fit

NEW

This is what cool and confident looks like today. Long sweeping bangs. Serious waves. Volume that is turned up just enough to notice. Wear it, work it, love it!

## IN CHARGE



TRU2LIFE<sup>®</sup>  
HEAT-FRIENDLY  
SYNTHETIC HAIR

Raquel is wearing RL29/25.

with  
**MEMORY  
CAP III**  
technology



NEW

Power on with this fresh, free flowing layered look. All natural energy. A cascade of soft waves we made all glossed and tossed. You make it effortless!

## HIGH OCTANE

TRU2LIFE  
HEAT-FRIENDLY  
SYNTHETIC HAIR

Raquel is wearing RL29/25.

with  
**MEMORY  
CAP III**  
technology



# You're a NATURAL.



Front, sides and back above shown in RL33/35.

Suitable for Oval, Round, Square, Diamond, Heart & Pear shaped faces.

**HEAD SIZE:** Average

**HAIR LENGTHS:** Front: 10½", Crown: 12", Sides: 13", Back: 13",  
Nape: 11½", Weight: 5.4 oz.

**AVAILABLE SHADES:** RL2/4, RL4/6, RL5/27, RL6/8, RL6/28, RL6/30,  
RL8/29, RL10/12, RL11/25, RL12/16, RL13/88, RL14/22, RL16/88, RL19/23,  
RL29/25, RL30/27, RL31/29, RL33/35

**SHADOW SHADES:** RL4/10SS, RL8/12SS, RL8/29SS, RL9/24SS,  
RL10/22SS, RL12/22SS, RL14/22SS, RL14/25SS, RL16/21SS, RL17/23SS,  
RL19/23SS, RL29/33SS, RL613SS

## TEMPLE-TO-TEMPLE LACE FRONT MONOFILAMENT TOP with Memory Cap® III Base

Monofilament top with  
fibers that are individually  
hand-tied, one by one,  
on the entire top for  
natural movement and  
parting flexibility

Sheer temple-to-temple  
lace front for natural  
looking off-the-face styling

Velvet-lined ear tabs

Velvet-lined extended nape



Patented Memory  
Cap III construction  
with silicone coated  
stretch lace that  
molds to the shape  
of the head for a  
custom-like fit

Ultra-thin adjusters  
at the nape for a  
personalized fit



Front, sides and back above shown in RL119.

Suitable for Oval, Round, Square, Diamond, Heart, Pear & Oblong shaped faces.

**HEAD SIZE:** Average

**HAIR LENGTHS:** Front: 4½", Crown: 6", Sides: 6", Back: 3½",  
Nape: 2", Weight: 3.28 oz.

**AVAILABLE SHADES:** RL2/4, RL4/6, RL5/27, RL6/8, RL6/28, RL6/30, RL8/29, RL10/12, RL11/25, RL12/16, RL13/88, RL14/22, RL14/25, RL16/88, RL19/23, RL29/25, RL30/27, RL31/29, RL32/31, RL51/61, RL56/60, RL119

**SHADOW SHADES:** RL4/10SS, RL8/12SS, RL8/29SS, RL9/24SS, RL10/22SS, RL12/22SS, RL14/22SS, RL14/25SS, RL16/21SS, RL17/23SS, RL19/23SS, RL29/33SS, RL613SS

### TEMPLE-TO-TEMPLE LACE FRONT MONOFILAMENT TOP with Memory Cap® III Base

Monofilament top with fibers that are individually hand-tied, one by one, on the entire top for natural movement and parting flexibility

Sheer temple-to-temple lace front for natural looking off-the-face styling

Velvet-lined ear tabs

Velvet-lined nape



Patented Memory Cap III construction with silicone coated stretch lace that molds to the shape of the head for a custom-like fit

Ultra-thin adjusters at the nape for a personalized fit

# UNDONE



NEW

Very pretty amped up to pretty fabulous—natural tousled texture makes way for a very modern look. Lighten up. Loosen up. And let the flirting begin!

## FLIRTING WITH FASHION

... But totally together.

with  
**MEMORY  
CAP III**  
technology



All free-flowing movement with light, airy layers and tapered ends that sweep away from the face. Style it your way and you're on your way!

PRETTY PLEASE!

Totally effortless...

**TRU2LIFE**  
HEAT-FRIENDLY  
SYNTHETIC HAIR

Raquel is wearing RL29/25.



# YOU got this!



Front, sides and back above shown in RL16/88.

Suitable for Oval, Round, Square, Diamond, Heart & Pear shaped faces.

**HEAD SIZE:** Average

**HAIR LENGTHS:** Front: 6½", Crown: 9¼", Sides: 9¼", Back: 9¼", Nape: 8¾",  
Weight: 4.25 oz.

**AVAILABLE COLORS:** RL2/4, RL4/6, RL5/27, RL6/8, RL6/28, RL6/30,  
RL8/29, RL10/12, RL11/25, RL12/16, RL13/88, RL14/22, RL14/25, RL16/88,  
RL19/23, RL29/25, RL30/27, RL31/29, RL32/31, RL33/35, RL56/60, RL511

**SHADOW SHADES:** RL4/10SS, RL8/12SS, RL8/29SS, RL9/24SS,  
RL10/22SS, RL12/22SS, RL14/22SS, RL14/25SS, RL17/23SS, RL19/23SS,  
RL29/33SS, RL613SS

---

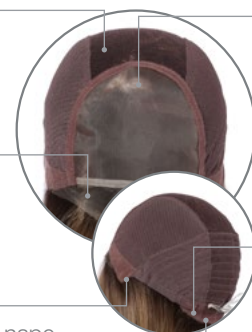
## TEMPLE-TO-TEMPLE LACE FRONT MONOFILAMENT TOP with 100% Hand-Tied Base

---

Light, cool 100%  
hand-tied base

Sheer temple-to-  
temple lace front for  
natural looking off-  
the-face styling

Velvet-lined ear tabs  
Velvet-lined extended nape



Monofilament top with  
fibers that are individually  
tied, one by one, on the  
entire top for natural  
movement and parting  
flexibility

Ultra-thin adjusters  
at the nape for  
a personalized fit



Front, sides and back above shown in RL29/25.

Suitable for Oval, Diamond, Heart, Pear and Oblong shaped faces.

**HEAD SIZE:** Average

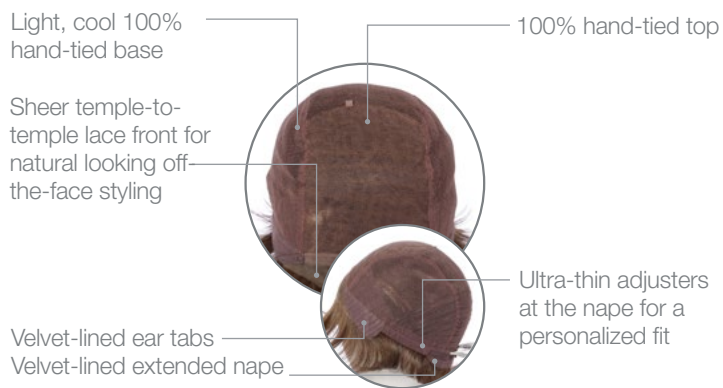
**HAIR LENGTHS:** Front: 5", Crown: 6", Sides: 3", Back: 4", Nape: 3",  
Weight: 2.3 oz.

**AVAILABLE COLORS:** RL2/4, RL4/6, RL5/27, RL6/8, RL6/28, RL6/30,  
RL8/29, RL10/12, RL11/25, RL12/16, RL13/88, RL14/22, RL14/25, RL16/88,  
RL19/23, RL29/25, RL30/27, RL31/29, RL32/31, RL33/35, RL51/61, RL56/60,  
RL119, RL511

**SHADOW SHADES:** RL4/10SS, RL8/12SS, RL8/29SS, RL9/24SS,  
RL10/22SS, RL12/22SS, RL14/22SS, RL14/25SS, RL17/23SS, RL19/23SS,  
RL29/33SS, RL613SS

---

TEMPLE-TO-TEMPLE  
LACE FRONT HAND-TIED TOP  
with 100% Hand-Tied Base



The New Short.

# OWN IT.



Taking short to the next level, this look is nothing short of sensational. A face-framing silhouette with a tumble of waves and a whisper of gentle bangs. High-impact, low-maintenance. What are you waiting for?!

---

## READY FOR TAKEOFF

---



TRU2LIFE  
HEAT-FRIENDLY  
SYNTHETIC HAIR

Raquel is wearing RL29/25.

Not too short, not too long, there's a reason this chin length lob is one of this season's most-sought-after salon styles. Beautifully textured, with gentle waves and loose layers all over. Care Free Beauty: Look fabulous without lifting a finger!

UNFILTERED

Not too fussy. Not too messy...



TRU2LIFE  
HEAT-FRIENDLY  
SYNTHETIC HAIR

Model is wearing  
RL17/23SS.



# just YOUR style.



Front, sides and back above shown in RL14/25SS.

Suitable for Oval, Round, Square, Diamond, Heart, Pear & Oblong shaped faces.

**HEAD SIZE:** Average

**HAIR LENGTHS:** Front: 10", Crown: 9", Sides: 6", Back: 7½",

Nape: 3½", Weight: 3.75 oz.

**AVAILABLE COLORS:** RL2/4, RL4/6, RL5/27, RL6/8, RL6/28, RL6/30, RL8/29, RL10/12, RL11/25, RL12/16, RL13/88, RL14/22, RL14/25, RL16/88, RL19/23, RL29/25, RL30/27, RL31/29, RL33/35, RL56/60, RL511

**SHADOW SHADES:** RL4/10SS, RL8/12SS, RL8/29SS, RL9/24SS, RL10/22SS, RL12/22SS, RL14/22SS, RL14/25SS, RL17/23SS, RL19/23SS, RL29/33SS, RL613SS

---

## TEMPLE-TO-TEMPLE LACE FRONT MONOFILAMENT TOP with Memory Cap® III Base

Monofilament top with fibers that are individually hand-tied, one by one, on the entire top for natural movement and parting flexibility

Sheer temple-to-temple lace front for natural looking off-the-face styling

Velvet-lined ear tabs

Velvet-lined extended nape



Patented Memory Cap III construction with silicone coated stretch lace that molds to the shape of the head for a custom-like fit

Ultra-thin adjusters at the nape for a personalized fit

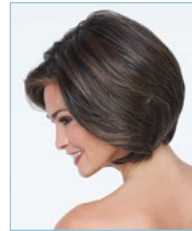


## New! IN CHARGE

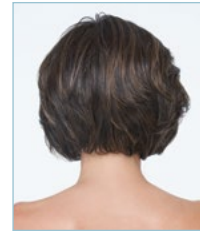
SHEER INDULGENCE™ TEMPLE-TO-TEMPLE  
LACE FRONT MONOFILAMENT PART  
MEMORY CAP® III BASE

Suitable for Oval, Round, Diamond, Pear and Oblong shaped faces.

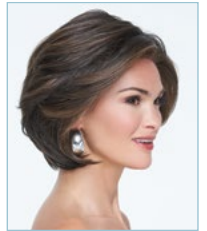
Multi-layering throughout this stacked bob lets you call the shots. A shorter crown with length in the front adds volume and offers varied styling options. Gentle waves sweep away from the face creating fullness that can be brushed smooth, tucked behind one ear, or worn loose and tumbled. (Shown in RL29/25 on Raquel and RL4/10SS on model.)



SIDE



BACK



SIDE

**HEAD SIZE:** Average

**HAIR LENGTHS:** Front – 7¼", Crown – 7", Sides – 6½", Back – 6½", Nape – 3", Weight: 4.1 oz.

**AVAILABLE COLORS:** RL2/4, RL4/6, RL5/27, RL6/8, RL6/28, RL6/30, RL8/29, RL10/12, RL11/25, RL12/16, RL13/88, RL14/22, RL14/25, RL16/88, RL19/23, RL29/25, RL30/27, RL31/29, RL32/31, RL33/35, RL51/61, RL56/60, RL119

**SHADOW SHADES®:** RL4/10SS, RL8/12SS, RL8/29SS, RL9/24SS, RL10/22SS, RL12/22SS, RL14/22SS, RL14/25SS, RL16/21SS, RL17/23SS, RL19/23SS, RL29/33SS, RL613SS

## New! HIGH OCTANE

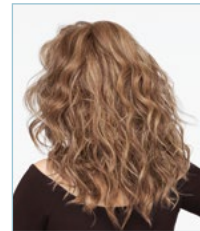
SHEER INDULGENCE™ TEMPLE-TO-TEMPLE  
LACE FRONT MONOFILAMENT TOP  
MEMORY CAP® III BASE

Suitable for Oval, Round, Square, Diamond, Heart & Pear shaped faces..

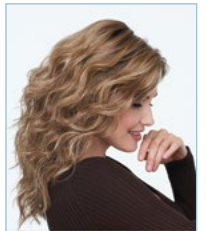
Power on with this long, layered look. The soft, casual beach wave texture is stylish enough for daywear and shifts into high gear glamour for evening. Temple-to-temple lace front lets you style half-up/half-down or pull into a low ponytail. (Shown in RL29/25 on Raquel and RL14/22SS on model.)



SIDE



BACK



SIDE

**HEAD SIZE:** Average

**HAIR LENGTHS:** Front – 10½", Crown – 12", Sides – 13", Back – 13", Nape – 11½", Weight: 5.4 oz.

**AVAILABLE COLORS:** RL2/4, RL4/6, RL5/27, RL6/8, RL6/28, RL6/30, RL8/29, RL10/12, RL11/25, RL12/16, RL13/88, RL14/22, RL16/88, RL19/23, RL29/25, RL30/27, RL31/29, RL33/35

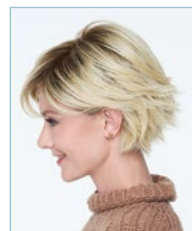
**SHADOW SHADES®:** RL4/10SS, RL8/12SS, RL8/29SS, RL9/24SS, RL10/22SS, RL12/22SS, RL14/22SS, RL14/25SS, RL16/21SS, RL17/23SS, RL19/23SS, RL29/33SS, RL613SS

## New! FLIRTING WITH FASHION

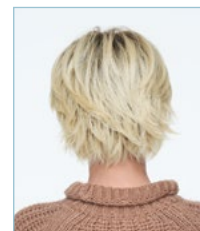
SHEER INDULGENCE™ TEMPLE-TO-TEMPLE  
LACE FRONT MONOFILAMENT TOP  
MEMORY CAP® III BASE

Suitable for Oval, Round, Square, Diamond, Heart, Pear & Oblong shaped faces.

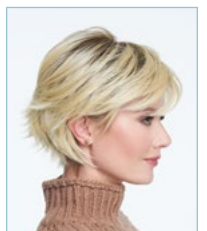
Lighten up and loosen up with this carefree multi-layered crop. A tapered eyelash bang, longer side lengths and the piecey nape can be worn smooth or piece out the texture with styling paste. Easy to manage, easy to style, fashion to go! (Shown in RL613SS on model.)



SIDE



BACK



SIDE

**HEAD SIZE:** Average

**HAIR LENGTHS:** Front – 4½", Crown – 6", Sides – 6", Back – 3½", Nape – 2", Weight: 3.28 oz.

**AVAILABLE COLORS:** RL2/4, RL4/6, RL5/27, RL6/8, RL6/28, RL6/30, RL8/29, RL10/12, RL11/25, RL12/16, RL13/88, RL14/22, RL14/25, RL16/88, RL19/23, RL29/25, RL30/27, RL31/29, RL32/31, RL51/61, RL56/60, RL119

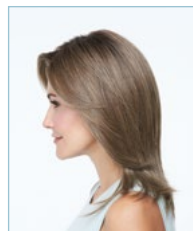
**SHADOW SHADES®:** RL4/10SS, RL8/12SS, RL8/29SS, RL9/24SS, RL10/22SS, RL12/22SS, RL14/22SS, RL14/25SS, RL16/21SS, RL17/23SS, RL19/23SS, RL29/33SS, RL613SS

## PRETTY PLEASE!

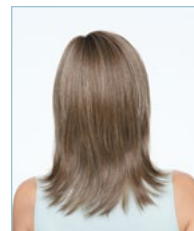
SHEER INDULGENCE™ TEMPLE-TO-TEMPLE  
LACE FRONT MONOFILAMENT TOP  
100% HAND-TIED BASE

Suitable for Oval, Round, Square, Diamond, Heart & Pear shaped faces.

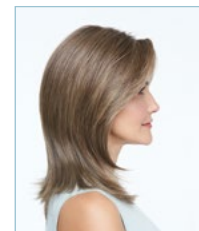
This mid-length, shoulder-length cut is loaded with free-flowing movement. With light and airy layers that give soft definition to the overall look and a longer eyelash bang with tapered ends that sweeps away from the face, this is the perfect salon-inspired, layered cut. Plus, the 100% hand-tied construction affords the ultimate in light, cool comfort and styling ability. (Shown in RL29/25 on Raquel and RL10/22SS on model.)



SIDE



BACK



SIDE

HEAD SIZE: Average

HAIR LENGTHS: Front: 6½", Crown: 9¼", Sides: 9¼", Back: 9¼", Nape: 8¾", Weight: 4.25 oz.

AVAILABLE COLORS: RL2/4, RL4/6, RL5/27, RL6/8, RL6/28, RL6/30, RL8/29, RL10/12, RL11/25, RL12/16, RL13/88, RL14/22, RL14/25, RL16/88, RL19/23, RL29/25, RL30/27, RL31/29, RL32/31, RL33/35, RL56/60, RL511

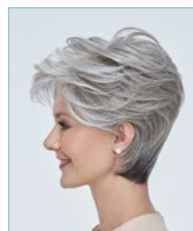
SHADOW SHADES®: RL4/10SS, RL8/12SS, RL8/29SS, RL9/24SS, RL10/22SS, RL12/22SS, RL14/22SS, RL14/25SS, RL17/23SS, RL19/23SS, RL29/33SS, RL613SS

## READY FOR TAKEOFF

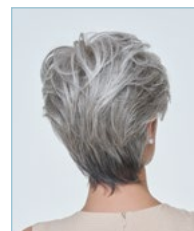
SHEER INDULGENCE™ TEMPLE-TO-TEMPLE  
LACE FRONT HAND-TIED TOP  
100% HAND-TIED BASE

Suitable for Oval, Diamond, Heart, Pear and Oblong shaped faces.

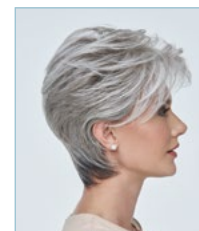
A face-framing, polished and sophisticated silhouette, this style includes undulating waves throughout for a natural, yet stylized flair. The softly etched bangs and the nape area perfectly frame the face and neck for style the look of an expertly crafted and professional cut. The lace front monofilament top and 100% hand-tied base offer the ultimate in light, cool comfort. (Shown in RL29/25 on Raquel and RL51/61 on model.)



SIDE



BACK



SIDE

HEAD SIZE: Average

HAIR LENGTHS: Front – 5", Crown – 6", Sides – 3", Back – 4", Nape – 3", Weight: 2.3 oz.

AVAILABLE COLORS: RL2/4, RL4/6, RL5/27, RL6/8, RL6/28, RL6/30, RL8/29, RL10/12, RL11/25, RL12/16, RL13/88, RL14/22, RL14/25, RL16/88, RL19/23, RL29/25, RL30/27, RL31/29, RL32/31, RL33/35, RL51/61, RL56/60, RL119, RL511

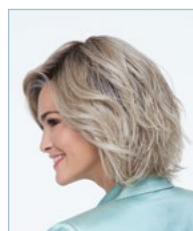
SHADOW SHADES®: RL4/10SS, RL8/12SS, RL8/29SS, RL9/24SS, RL10/22SS, RL12/22SS, RL14/22SS, RL14/25SS, RL17/23SS, RL19/23SS, RL29/33SS, RL613SS

## UNFILTERED

SHEER INDULGENCE™ TEMPLE-TO-TEMPLE  
LACE FRONT MONOFILAMENT TOP  
MEMORY CAP® III BASE

Suitable for Oval, Round, Square, Diamond, Heart, Pear & Oblong shaped faces.

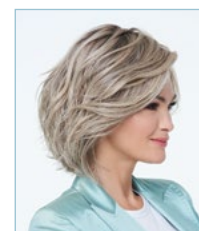
The waved texture and loose layers throughout this chin length silhouette make this style one of the most sought after looks today. The hair moves freely with a tousled effect that gives this "lob" a unique feeling of natural movement and the lace front monofilament top allows for varied styling options. (Shown in RL17/23SS on model.)



SIDE



BACK



SIDE

HEAD SIZE: Average

HAIR LENGTHS: Front – 10", Crown – 9", Sides – 6", Back – 7½", Nape – 3½", Weight: 3.75 oz.

AVAILABLE COLORS: RL2/4, RL4/6, RL5/27, RL6/8, RL6/28, RL6/30, RL8/29, RL10/12, RL11/25, RL12/16, RL13/88, RL14/22, RL14/25, RL16/88, RL19/23, RL29/25, RL30/27, RL31/29, RL33/35, RL56/60, RL511

SHADOW SHADES®: RL4/10SS, RL8/12SS, RL8/29SS, RL9/24SS, RL10/22SS, RL12/22SS, RL14/22SS, RL14/25SS, RL17/23SS, RL19/23SS, RL29/33SS, RL613SS

# TRU2LIFE®

## HEAT-FRIENDLY FIBER

*Create the look you're looking for in just minutes with the amazingly versatile Tru2Life® heat-friendly synthetic fiber. You can wear wigs or hairpieces made of this fiber fully styled, right out of the box. Or give it your own touch: curl, blow dry, or flat iron (up to 350° F). Luminous, hand-blended Tru2Life® salon-inspired colors give you the look and highlights of natural, beautiful hair.*

## FEATURING SHEER INDULGENCE

*A wig collection that's as close to custom-made as you can get. Each Sheer Indulgence™ style features some form of hand-tied monofilament design, seamless details and exquisite craftsmanship for a look, feel and fit that is pure luxe.*

## HAIR CARE & HANDLING INSTRUCTIONS

### PRE-WASH

- Gently remove tangles with fingers or a wide-tooth comb. Start at the ends and slowly work toward the roots to avoid damage. Do not brush.

### WASH/CONDITION

- Add a small amount of HairUWear Shampoo to a washbasin of cool water. Use shampoo sparingly.
- Place product in washbasin and allow it to soak for 5 minutes. Do not scrunch or agitate the product.
- Rinse by holding under running cool water until the water runs clear. Gently squeeze or use a clean, dry towel to press out excess water. Do not twist or wring.
- Apply a light coat of HairUWear Leave-in Conditioner + Detangler avoiding the base and roots. Applying conditioner to the base may cause shedding.
- Place wet wig on a folding HairUWear Wig Stand until it is completely dry. Finger styling is recommended.

### STYLING

- Shake and style with your fingers to achieve the desired look. We recommend a HairUWear Styling Brush, HairUWear Styling Comb or fingers to style.
- Apply a light mist of HairUWear Leave-in Conditioner + Detangler to difficult tangles if needed.
- Heat-friendly synthetic fiber can be curled, blow dried or flat ironed to achieve a different hairstyle.
- Heat-friendly synthetic fiber can withstand heat up to 350°F/180°C. We recommend a low-medium setting.

- To straighten, take a 1 inch section starting at the roots and run a flat iron to the ends.
- To curl, wrap the hair around a curling iron and hold for 10 seconds. Carefully slide the iron out and pin the curl in place. Once the fiber has completely cooled it will keep the curl until heat is applied again.
- If desired, use HairUWear Hair Spray on the final styled product.

### TIPS & TRICKS

- Soaking longer than the recommended time will damage the product.
- Hot water will damage heat-friendly synthetic fiber.
- Sudden bursts of heat, such as opening an oven door, will damage heat-friendly synthetic fiber.
- Do not dry on a solid form or mannequin head to avoid stretching the cap.
- We do not recommend sleeping, showering or swimming during wear.
- Store the wig on a HairUWear Wig Stand to avoid unwanted kinks or crimps.
- Lace is delicate and should not be tugged or pulled.
- After extended wear, matting and frizz can occur. To smooth, wash, condition and spray with HairUWear Leave-in Conditioner + Detangler then blow dry with a HairUWear Styling Brush.
- Fiber will be damaged if the heat setting is too high. We do not recommend curling or straightening the hair while wearing. Heat-friendly synthetic fiber will get very hot.
- Any cutting should be done by a professional hair stylist. No returns or exchanges will be allowed for worn or altered products.

STYLED GUIDE



## Raquel Welch Tru2Life® Colors

Tru2Life® synthetic fiber looks and feels like real hair. The texture is light, soft and lustrous without being shiny, plus it's heat-friendly! Straight styles can be curled and curly styles can be straightened using your flat iron, curling iron or blow dryer.



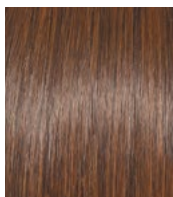
RL2/4  
Off Black



RL4/6  
Black Coffee



RL5/27  
Ginger Brown



RL6/8  
Dark Chocolate



RL6/28  
Bronzed Sable



RL6/30  
Copper Mahogany



RL8/29  
Hazelnut



RL10/12  
Sunlit Chestnut



RL11/25  
Golden Walnut



RL12/16  
Honey Toast



RL13/88  
Golden Pecan



RL14/22  
Pale Gold Wheat



RL14/25  
Honey Ginger



RL16/88  
Pale Golden Honey



RL19/23  
Biscuit



RL25/27  
Butterscotch



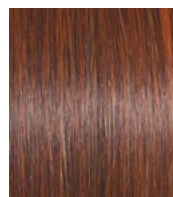
RL29/25  
Golden Russet



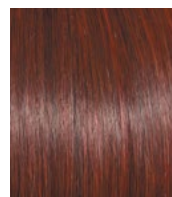
RL30/27  
Rusty Auburn



RL31/29  
Fiery Copper



RL32/31  
Cinnabar



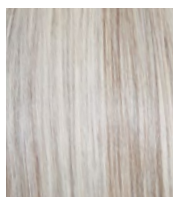
RL33/35  
Deepest Ruby



RL38  
Smoke



RL51/61  
Iced Granita



RL56/60  
Silver

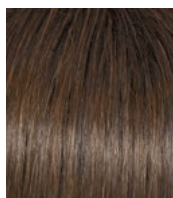


RL119  
Silver & Smoke

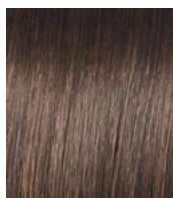


RL511  
Sugar & Charcoal

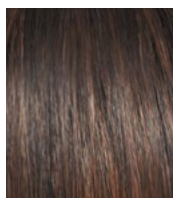
### Shadow Shades®



RL4/10SS  
Shaded Iced Java



RL8/12SS  
Shaded Iced Mocha



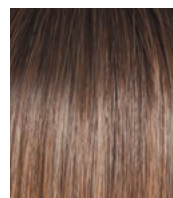
RL8/29SS  
Shaded Hazelnut



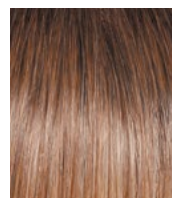
RL9/24SS  
Shaded Iced Café Latte



RL10/22SS  
Shaded Iced Cappuccino



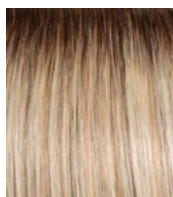
RL12/22SS  
Shaded Cappuccino



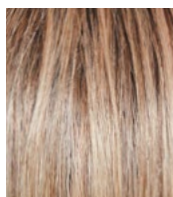
RL14/22SS  
Shaded Wheat



RL14/25SS  
Shaded Honey Ginger



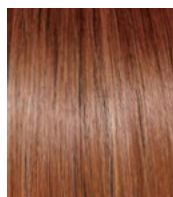
RL16/21SS  
Shaded Sand



RL17/23SS  
Shaded Iced Latte Macchiato



RL19/23SS  
Shaded Biscuit



RL29/33SS  
Shaded Iced Pumpkin Spice



RL613SS  
Shaded Platinum

Pictured colors may vary slightly from the actual color.



HAIRUWEAR®

[RaquelWelchWigs.com](http://RaquelWelchWigs.com)

888-655-8900 / [@raquelwelchwig](https://www.instagram.com/raquelwelchwig)



© 2020 HairUWear Inc.