

• N A T U R A L  
image



COLLECTION  
2020/2021

## Natural Image Collection

Admiration	42	Jane	66
Adore	30	Janet	70
April	43	Josephine	41
April Deluxe	43	Just Right	69
Audacious	45	Katyana	65
Balance	58	Kim	62
Believe	50	Kim Deluxe	63
Beverley	38	Milady	72
Breeze	73	Motif	37
Celine	46	Mysterious	40
Chanelle	34	Nice 'n' Neat	68
Charm	54	Opportunity	39
Christina	70	Pearl	52
Coming up Rosy	35	Perception	57
Composed	29	Perspective	48
Constant	53	Realize	49
Crystal	38	Refresh	61
Danni	32	Resonate	51
Daring	50	Ruby	73
Definitely	74	Sally	55
Delight	52	Sally Deluxe	55
Edition	36	Serene	58
Elegance	56	Short & Sweet	68
Elusive	34	Short Cut	67
Embrace	33	Simplify	64
Empathy	35	Something Special	71
Enhance	74	Sprite	42
Eternity	59	Sue	56
Fresh Start	44	Sultry	71
Gemini	66	Tailored	31
Harwood	47	Tease	28
Iconic	60	Vernice	69
Imagine	59	Virgo	72
Instinct	44	Vision	65
Jaimie	46	Zara	45

## Inspired Collection

Attract	22	Impact	20
Beguile	21	Infinity	4
Bliss	26	Influence	17
Chance	12	Intimate	18
Create	27	Intent	15
Definitive	19	Meghan	6
Discovery	25	Prestige	13
Dream	24	Radiant	27
Dream Deluxe	24	Shine	11
Echo	14	Signature	18
Everlasting	9	Tantalise	16
Fantasy	6	Temptation	10
Heaven	23	Tranquil	8
Illustrious	5	Wonderous	7

## Top Pieces and Hair Pieces

Layered Short Top Piece	75	Tousled Wrap	77
Mid Length Lace Front Topper	75	The Undone Chignon	78
The Creative Weft	76	Delicate Clip In	78
Super Boost	76	Curled Clip in Pony	78
Sleek Mini Piece	76	Dainty Clip	78
Super Grande Pony	76	Updo Creator	79
Mini Clip Bun	77	Big Waves Wrap	79
Bouncy Wrap	77	Charming Wrap	79
Messy Top Knot	77	Curly Palm Clip	79

## INSPIRED COLLECTION

The Inspired Collection has been created to be ultra luxurious with details like Lace Fronts, Monofilament tops & hand tied caps.

Pages 4 to 27

## Beautiful BOBS

Bobs are chic, easy to wear and ever stylish.

Pages 28 to 35

## Lovely LENGTHS

Gorgeous long locks will always be in fashion.

Pages 36 to 41

## Short CUTS

Short Chic Styles for everyday wear.

Pages 42 to 47

## Classic LUXURY

Classic styles with luxury detailing.

Pages 48 to 59

## THE NEW *Classics*

Created for the new classic woman, inspired by style icons.

Pages 60 to 65

## *Classic*

Favourite styles that have passed the test of time.

Pages 66 to 74

## *Top Pieces* & HAIR ADDITIONS

Hair additions and top pieces for extra volume and style.

Page 75

## *Hot Hair Pieces*

Easy and speedy hairpiece solutions for updos. You can even use these with a long wig to create different looks!

Pages 76 to 79

## *Childrens* WIGS

Our Mini Petite wigs are perfect for little heads.

Page 80

Easily find our wigs with luxury details by looking for their symbols throughout the catalogue.

L

Lace Front

M

Monofilament

H

Hand Tied

## TURBANS

Page 81

## WIG CARE & ACCESSORIES

Page 82

## INSIDE WIGS

Page 83

# N A T U R A L image

Gorgeous styles for  
everybody, designed by  
our team of experts.

Now available  
in selected  
favourite styles.



Pewter Glow



Onyx Glow

Iconic  
Onyx Glow  
see page 60

Watch out for our popular & beautiful **Rooted Colours**, now available in even more styles!



Creamy Glow  
Rooted



Rich Chestnut Glow  
Rooted



Platinum Mist  
Rooted



Chocolate Glow  
Rooted



Caramel Glow  
Rooted



Burnished Snow  
Rooted

# INSPIRED

## COLLECTION

The Inspired Collection has been created to be ultra luxurious with details like Lace Fronts, Monofilament tops & hand-tied caps.

The styles themselves are inspired by the latest in Fashion & Celebrity hair trends, making these beautiful wigs both fashionable and ultra-realistic.



### Infinity (CODE: INF)

Poker-straight layers which just skim the shoulder-blades and an expertly cut fringe define Infinity - a contemporary style which looks salon-styled. The Monofilament Top allows you to part the hair in any direction whilst the deluxe Lace Front and Comfort Cap ensure optimum comfort.

**LENGTH FROM CROWN**

4"

**LENGTH FROM NAPE**

5 1/2"

**LENGTH FROM SIDE OF HEAD**

7 1/2"

**CAP TYPE:** Monofilament Parting with a Lace Front and Comfort Cap

**CAP SIZES:** Petite and Mini Petite

**COLOURS:**

- Rich Ebony (G2+)
- Dark Chocolate Mist (G4+)
- Coffee Mist (G6+)
- Chocolate Copper Mist (G630+)
- Nutmeg Mist (G10+)
- Pecan Mist (G12+)
- Cappuccino Mist (G13+)
- Almond Mist (G14+)
- Honey Mist (G16+)
- Praline Mist (G19+)
- Wheat Mist (G20+)
- Cayenne Mist (G29+)\*
- Paprika Mist (G30+)

\* Not available in Mini Petite

2  
sizes

L

M

Wheat Mist



Coffee Mist



Rich Chestnut  
Glow

new

## Illustrious (CODE: ILST)

We're all in love with Illustrious! This sleek longer bob skims the clavicles, while the mono top can be moved to create a lovely side swept parting or created to sit more to the middle.

LENGTH FROM CROWN	LENGTH FROM NAPE	LENGTH FROM SIDE OF HEAD
14"	6"	12"

**CAP TYPE:** Lace front, Mono Top, Comfort Cap base

**CAP SIZES:** Average

### COLOURS:

- Pewter Glow (#61/41)
- Onyx Glow (44/38/56)
- Caramel Glow Rooted (CAG#6)
- Creamy Glow (CRG)
- Creamy Glow Rooted (CRG#10)
- Nutmeg Mist (G10)
- Plat Mist Rtd (G101#10)
- Almond Mist A (G14)
- Praline Mist A (G19)
- Rich Ebony (G2)
- Wheat Mist (G20)
- Dark Chocolate Mist (G4)
- Coffee Mist (G6)
- Burnished Snow Rooted (G60#2)
- Rich Chestnut Glow (RCG)

L M



Burnished Snow Rooted





Creamy Glow Rooted

## Fantasy (CODE: FTY)

Have the hair you have always dreamed of with Fantasy. Inspired by one of our favourite best tressed celebs, this style will wow anyone. The sheer lace front adds the most natural looking hairline.

LENGTH FROM CROWN	LENGTH FROM NAPE	LENGTH FROM SIDE OF HEAD
10"	12"	8"

**CAP TYPE:** Monofilament Part & Lace Front with Comfort Cap Base

**CAP SIZES:** Petite

**COLOURS:**

- Rich Ebony (G2+)
- Dark Chocolate Mist (G4+)
- Nutmeg Mist (G10+)
- Cappuccino Mist (G13+)
- Almond Mist (G14+)
- Praline Mist (G19+)
- Wheat Mist (G20+)
- Chocolate Copper Mist (G630+)
- Strawberry Glow (SWG)
- Chocolate Glow Rooted (CHG#2)
- Rich Chestnut Glow (RCG)
- Creamy Glow (CRG)
- Creamy Glow Rooted (CRG#10)
- Caramel Glow (CAG)



L  
M

## Meghan (CODE: MEGH)

Pretty barely there waves and a centre part are inspired by our newly married member of the Royal family.

LENGTH FROM CROWN	LENGTH FROM NAPE	LENGTH FROM SIDE OF HEAD
37cm/14"	37cm/14"	30cm/12"

**CAP TYPE:** Monofilament Part & Lace Front with Comfort Cap Base

**CAP SIZES:** Average

**COLOURS:**

- Chocolate Glow Rooted (CHG#2)
- Rich Ebony (G2+)
- Dark Chocolate Mist (G4+)
- Coffee Mist (G6+)
- Chestnut Mist (G8+)
- Wheat Mist (G20+)
- Paprika Mist (G30+)

Dark Chocolate Mist



L  
M



new

Wheat Mist

## Wonderous (CODE: WNDR)

Wonderous is the perfect length, just hitting the mid back, & with a softly cut fringe that can be worn to one side, or parted in the middle.

LENGTH FROM CROWN	LENGTH FROM NAPE	LENGTH FROM SIDE OF HEAD
14 1/2"	8 1/2"	12"

**CAP TYPE:** Lace Front, Mono Part, Comfort Cap base

**CAP SIZES:** Petite

### COLOURS:

- Caramel Glow Rooted (CAG#6)
- Creamy Glow Rooted (CRG#10)
- Platinum Mist Rooted (G101#10)
- Cappuccino Mist (G13)
- Praline Mist (G19)
- Rich Ebony (G2)
- Wheat Mist (G20)
- Dark Chocolate Mist (G4)
- Coffee Mist (G6)
- Chocolate Copper Mist (G630)
- Rich Chestnut Glow Rooted (RCG#4)

L

M



Creamy Glow Rooted



Chestnut Glow Rooted





Burnished  
Snow  
Rooted

Tranquil (CODE: TRAN)

A chic, straight mid-length bob that has been lightly feathered to frame the face & set off your best features.

LENGTH FROM CROWN	LENGTH FROM NAPE	LENGTH FROM SIDE OF HEAD
12"	5 1/4"	9"

**CAP TYPE:** Monofilament Part & Lace Front with Comfort Cap Base

**CAP SIZES:** Average & Petite

**COLOURS:**

- G2 Rich Ebony
- G4 Dark Chocolate Mist
- G6 Coffee Mist
- G12 Pecan Mist
- G14 Almond Mist
- G19 Praline Mist
- G20 Wheat Mist
- G30 Paprika Mist
- CAG #6 Caramel Glow Rooted
- RCG#4 Rich Chestnut Glow Rooted
- G60 #2 Burnished Snow Rooted
- Chocolate Glow Rooted (CHG#2)\*
- Chocolate Copper Mist (G630)\*
- Chestnut mist (G8)\*
- SWG Strawberry Glow
- CRG Creamy Glow

2  
sizes

L

M



Wheat Mist



Rich Chestnut Glow Rooted

## Everlasting (CODE: EVL)

A chic bob which just skims the shoulders, Everlasting is a modern style with a sexy, heavy fringe. The Monofilament Top also features a polyurethane strip, which provides you with a strip to attach wig tape for extra security. The Comfort Cap construction is light and breathable and will keep you feeling fresh and comfortable all day long.

LENGTH FROM CROWN	LENGTH FROM NAPE	LENGTH FROM SIDE OF HEAD
13"	6 1/4"	10"

**CAP TYPE:** Monofilament Top with Polyurethane strip & Comfort Cap Base

**CAP SIZES:** Average

### COLOURS:

- Pewter Glow (#61/41)
- Dark Chocolate Mist (G4+)
- Coffee Mist (G6+)
- Chocolate Copper Mist (G6/30+)
- Almond Mist (G14+)
- Honey Mist (G16+)
- Nutmeg Mist (G10+)
- Praline Mist (G19+)
- Wheat Mist (G20+)

M

Pewter  
Glow



Chocolate Copper Mist

**Temptation** (CODE: TMPT)

This luxe style is 100% hand tied & is utterly old Hollywood Glam!

LENGTH FROM CROWN	LENGTH FROM NAPE	LENGTH FROM SIDE OF HEAD
16"	12"	12"

**CAP TYPE:** 100% hand tied, monofilament top & Lace front

**CAP SIZES:** Average

**COLOURS:**

- Caramel Glow Rooted (CAG#6)
- Choc Glow Rooted (CHG#2)
- Creamy Glow Rooted (CRG#10)
- Platinum Mist Rooted (G101#10)
- Pecan Mist (G12)
- Praline Mist (G19)
- Wheat Mist (G20)
- Dark Choc Mist (G4)
- Choc Copper Mist (G630)
- Chestnut Mist (G8)
- Swedish Blonde (SWB)



Caramel  
Glow Rooted



Caramel Glow Rooted



Wheat Mist



## Shine (CODE: SHIN)

A beautifully straight with a hint movement, this just below the shoulder length style is just perfect... Don't hide away... Shine on!

LENGTH FROM CROWN	LENGTH FROM NAPE	LENGTH FROM SIDE OF HEAD
15 1/2"	12"	14"

**CAP TYPE:** Monofilament Part & Lace Front with Comfort Cap Base

**CAP SIZES:** Petite

### COLOURS:

- G2 Rich Ebony
- G4 Dark Chocolate Mist
- G6 Coffee Mist
- G630 Chocolate Copper Mist
- G8 Chestnut Mist
- G12 Pecan Mist
- G14 Almond Mist
- G19 Praline Mist
- G20 Wheat Mist
- G101 Platinum Mist
- CAG #6 Caramel Glow Rooted
- RCG#4 Rich Chestnut Glow Rooted
- SWG Strawberry Glow
- CHG#2 Chocolate Glow Rooted
- CRG Creamy Glow

L

M

Caramel  
Glow  
Rooted



Dark Chocolate Mist



Paprika Mist

## Chance (CODE: CNE)

Take a Chance with long layers that fall to your back and frame your face. Loaded with movement yet ultra light. The monofilament top gives parting flexibility and natural movement whilst the comfort cap means you stay cool and fresh all day.

**LENGTH FROM CROWN**  
24"

**LENGTH FROM NAPE**  
16"

**LENGTH FROM SIDE OF HEAD**  
8-12"

**CAP TYPE:** Monofilament Top with Comfort Cap Base

**CAP SIZES:** Petite

**COLOURS:**

M

- Rich Ebony (G2+)
- Dark Chocolate Mist (G4+)
- Coffee Mist (G6+)
- Chocolate Copper Mist (G6/30+)
- Chestnut Mist (G8)
- Nutmeg Mist (G10+)
- Almond Mist (G14+)
- Praline Mist (G19+)
- Wheat Mist (G20+)
- Ginger Mist (G27+)
- Paprika Mist (G30+)



Rich Ebony

new

Swedish Blonde

## Prestige (CODE: PSTG)

This glam slightly longer style has waves that sit just below the collar bone. Subtle, yet gorgeous.

LENGTH FROM CROWN	LENGTH FROM NAPE	LENGTH FROM SIDE OF HEAD
14"	9 1/2"	13"

**CAP TYPE:** Lace Front with mono part & comfort cap

**CAP SIZES:** Average

### COLOURS:

- Caramel Glow Rooted (CAG#6)
- Choc Glow Rooted (CHG#2)
- Creamy Glow Rooted (CRG#10)
- Platinum Mist Rooted (G101#10)
- Pecan Mist (G12)
- Praline Mist (G19)
- Rich Ebony (G2)
- Wheat Mist (G20)
- Dark Choc Mist (G4)
- Choc Copper Mist (G630)
- Chestnut Mist (G8)
- Swedish Blonde (SWB)



Chocolate Glow Rooted



## Echo (CODE: ECHO)

Echo has long, softly razored layers that almost hit the shoulder blades. The side swept fringe can be parted on either side thanks to the monofilament top.

LENGTH FROM CROWN	LENGTH FROM NAPE	LENGTH FROM SIDE OF HEAD
11"	10"	5 1/2"

**CAP TYPE:** Monofilament Top with a Comfort Cap

**CAP SIZES:** Petite

### COLOURS:

- Rich Ebony (G2+)
- Dark Chocolate Mist (G4+)
- Coffee Mist (G6+)
- Chocolate Copper Mist (G630+)
- Nutmeg Mist (G10+)
- Cappuccino Mist (G13+)
- Almond Mist (G14+)
- Praline Mist (G19+)
- Wheat Mist (G20+)
- Strawberry Glow (SWG)
- Chocolate Glow (CHG)
- Chocolate Glow Rooted (CHG#2)
- Rich Chestnut Glow (RCG)
- Creamy Glow (CRG)
- Creamy Glow Rooted (CRG#10)
- Caramel Glow (CAG)

M

Strawberry Glow



Rich Ebony



new

Creamy Glow Rooted

## Intent (CODE: ITNT)

Intent has gorgeous tousled waves that cascade down the back & a pretty softly cut fringe that can be worn swept to one side, or as on-trend 'Curtain' bangs!

LENGTH FROM CROWN	LENGTH FROM NAPE	LENGTH FROM SIDE OF HEAD
15 1/5"	15"	12"

**CAP TYPE:** Lace front, Mono Top, Comfort Cap base

**CAP SIZES:** Average

### COLOURS:

- Caramel Glow Rooted (CAG#6)
- Creamy Glow Rooted (CRG#10)
- Platinum Mist Rooted (G101#10)
- Cappuccino Mist (G13)
- Praline Mist (G19)
- Rich Ebony (G2)
- Wheat Mist (G20)
- Dark Choc Mist (G4)
- Coffee Mist (G6)
- Chocolate Copper Mist (G630)

L M



Rich Ebony



Tantalise (CODE: TTL)

Gorgeous, straight, face-framing layers that fall to the middle of the back to create lots of natural movement and bounce. The cap is ultra luxurious with a monofilament top and a lace front for an undetectable hairline and is 100% hand-tied and contoured for a perfect, lightweight fit.

LENGTH FROM CROWN	LENGTH FROM NAPE	LENGTH FROM SIDE OF HEAD
11" (23" overall length from crown)	14"	10-15"

**CAP TYPE:** Monofilament Top with a Lace Front. 100% Hand Knotted Base with contouring around the back.

**CAP SIZES:** Average

COLOURS:

- Rich Ebony (G2+)
- Dark Chocolate Mist (G4+)
- Coffee Mist (G6+)
- Pecan Mist (G12+)
- Almond Mist (G14+)
- Praline Mist (G19+)
- Wheat Mist (G20+)
- Paprika Mist (G30+)

NOW WITH ADDITIONAL ROOTED COLOURS!

- Caramel Glow Rooted (CAG #6)
- Platinum Mist Rooted (G101#10)
- Creamy Glow Rooted (CRG#10)

Dark  
Chocolate  
Mist



Paprika Mist

## Influence (CODE: INFL)

Beautifully long with just the hint of movement through the ends and subtle layering for the most luxe, natural look.

LENGTH FROM CROWN	LENGTH FROM NAPE	LENGTH FROM SIDE OF HEAD
18"	16"	18"

**CAP TYPE:** Monofilament Part & Lace Front with Comfort Cap Base

**CAP SIZES:** Average

### COLOURS:

- G2 Rich Ebony
- G4 Dark Chocolate Mist
- G6 Coffee Mist
- G630 Chocolate Copper Mist
- G8 Chestnut Mist
- G12 Pecan Mist
- G14 Almond Mist
- G19 Praline Mist
- G20 Wheat Mist
- G30 Paprika Mist
- CAG #6 Caramel Glow Rooted
- CHG#2 Chocolate Glow Rooted
- G101#10 Platinum Mist Rooted
- SWG Strawberry Glow
- RCG Rich Chestnut Glow
- CRG Creamy Glow

Platinum  
Mist  
Rooted

L M



Chocolate Glow Rooted

Signature (CODE: SGNT)

A beautiful 100% hand-tied style that just skims the shoulders.

LENGTH FROM CROWN	LENGTH FROM NAPE	LENGTH FROM SIDE OF HEAD
15" (38cm)	12" (30cm)	15" (38cm)

CAP TYPE: 100% Hand Tied, Mono Top, Lace Front

CAP SIZES: Petite

COLOURS:

- CRG Creamy Glow
- CAG#6 Caramel Glow Rooted
- CHG#2 Chocolate Glow Rooted
- CRG#10 Creamy Glow Rooted
- G101#10 Platinum Mist Rooted
- RCG#4 Rich Chestnut Glow Rooted
- G2 Rich Ebony
- G4 Dark Choc Mist
- G6/30 Chocolate Copper Mist
- G10 Nutmeg Mist
- G14 Almond Mist
- G16 Honey Mist
- G19 Praline Mist
- G20 Wheat Mist
- G30 Paprika Mist



Caramel  
Glow Rooted



Wheat Mist



Intimate (CODE: INTM)

The perfect grown out long 'Bob' with luxury 100% hand tied & lace front detailing.

LENGTH FROM CROWN	LENGTH FROM NAPE	LENGTH FROM SIDE OF HEAD
12" (30.5cm)	7.5" (19cm)	13" (33cm)

CAP TYPE: 100% Hand Tied, Mono Top, Lace Front

CAP SIZES: Average

COLOURS:

- CAG Caramel Glow
- CRG Creamy Glow
- CRG#10 Creamy Glow Rooted
- G101#10 Platinum Mist Rooted
- RCG#4 Rich Chestnut Glow Rooted
- G2 Rich Ebony
- G4 Dark Choc Mist
- G6/30 Chocolate Copper Mist
- G14 Almond Mist
- G16 Honey Mist
- G19 Praline Mist
- G20 Wheat Mist
- G30 Paprika Mist



Platinum  
Mist  
Rooted



Caramel Glow

## Definitive (CODE: DFTV)

A pretty modern bob with a soft swooping fringe.  
100% hand tied with a lace front for extra luxury!

LENGTH FROM CROWN	LENGTH FROM NAPE	LENGTH FROM SIDE OF HEAD
6" (15cm)	2" (5cm)	6.5" (16.5cm)

**CAP TYPE:** 100% Hand Tied, Mono Top, Lace Front

**CAP SIZES:** Petite

### COLOURS:

- CRG Creamy Glow
- CAG#6 Caramel Glow Rooted
- CRG#10 Creamy Glow Rooted
- G4 Dark Choc Mist
- G6/30 Chocolate Copper Mist
- G8 Chestnut Mist
- G12 Pecan Mist
- G14 Almond Mist
- G19 Praline Mist
- G20 Wheat Mist
- G101 Platinum Mist

L

M

H

Creamy  
Glow



Wheat Mist



Chocolate Copper Mist



## Impact (CODE: IMC)

A chic bob given a modern twist with softly waved ends and a sweeping fringe. The lace front creates an amazingly natural looking hairline.

LENGTH FROM CROWN	LENGTH FROM NAPE	LENGTH FROM SIDE OF HEAD
9"	3"	6 1/2"

**CAP TYPE:** Monofilament Part & Lace Front with Comfort Cap Base

**CAP SIZES:** Petite

### COLOURS:

- Dark Chocolate Mist (G4+)
- Chocolate Copper Mist (G630+)
- Nutmeg Mist (G10+)
- Cappuccino Mist (G13+)
- Almond Mist (G14+)
- Praline Mist (G19+)
- Wheat Mist (G20+)
- Strawberry Glow (SWG)
- Chocolate Glow Rooted (CHG#2)
- Rich Chestnut Glow (RCG)
- Creamy Glow (CRG)
- Creamy Glow Rooted (CRG#10)
- Caramel Glow (CAG)

L

M

Creamy Glow Rooted



Rich Chestnut Glow

Paprika  
Mist

## Beguile (CODE: BEGL)

A longer bob with beachy waves that just skim the collar bones. Fabulously fashionable and very wearable!

LENGTH FROM CROWN	LENGTH FROM NAPE	LENGTH FROM SIDE OF HEAD
28cm / 11.0"	18cm / 7.0"	26cm / 10.2"

**CAP TYPE:** Monofilament Parting with Lace Front

**CAP SIZES:** Average

### COLOURS:

- CAG Caramel Glow
- CHG#2 Chocolate Glow Rooted
- CRG#10 Creamy Glow Rooted
- RCG#4 Rich Chestnut Glow Rooted
- G10 Nutmeg Mist
- G2 Rich Ebony
- G4 Dark Choc Mist
- G6 Coffee Mist
- G8 Chestnut Mist
- G13 Cappuccino Mist
- G14 Almond Mist
- G19 Praline Mist
- G20 Wheat Mist
- G30 Paprika Mist

L M



Chocolate Glow Rooted

## Attract (CODE: ATR)

Short, sassy and perfectly pretty, Attract is a modern and neat bob with face-framing layers, a soft fringe and a nape-hugging neck that is tapered to perfection. The result is a head-turning silhouette that looks salon-styled. The Monofilament Top and lightweight comfort back will ensure that you feel as good as you look.

LENGTH FROM CROWN	LENGTH FROM NAPE	LENGTH FROM SIDE OF HEAD
9 1/2"	2"	7-8"

**CAP TYPE:** Monofilament Top with a Comfort Cap Base

**CAP SIZES:** Petite

### COLOURS:

- Dark Chocolate Mist (G4+)
- Coffee Mist (G6+)
- Pecan Mist (G12+)
- Almond Mist (G14+)
- Praline Mist (G19+)
- Wheat Mist (G20+)
- Ginger Mist (G27+)
- Sugared Walnut (G38+)
- Burnished Snow (G60+)
- Platinum Mist (G101+)

### 2 NEW COLOURS!

- Onyx Glow (44/38/56)
- Pewter Glow (#61/41)

M



Pecan Mist



Almond Mist



## Heaven (CODE: HVN)

Short, sleek layers combined with a choppy fringe make Heaven a perfectly preened bob which is perfect for both daytime and evening wear. The flesh-coloured, monofilament top creates a natural look whilst the deluxe lace front and hand-tied mid-section will provide a comfortable, feather light feel, wear after wear.

LENGTH FROM CROWN	LENGTH FROM NAPE	LENGTH FROM SIDE OF HEAD
8"	2 1/2"	6"

**CAP TYPE:** Monofilament Top with a Lace Front. Hand-tied mid section with a Comfort Cap Base

**CAP SIZES:** Petite and Mini Petite

### COLOURS:

- Pewter Glow (#61/41)
- Dark Chocolate Mist (G4+)
- Coffee Mist (G6+)\*
- Chocolate Copper Mist (G6/30+)
- Chestnut Mist (G8+)\*
- Nutmeg Mist (G10+)
- Almond Mist (G14+)
- Honey Mist (G16+)
- Praline Mist (G19+)
- Wheat Mist (G20+)
- Cayenne Mist (G29+)
- Paprika Mist (G30+)\*
- Platinum Mist (G101+)

\* G6 & G8 Petite only

L

M

H

2  
sizes



Platinum Mist



Pewter Glow



Dream (CODE: DM)

Sleek, chin-length layers teamed with a sweeping fringe makes Dream a beautiful choice for both casual and formal looks. The Monofilament top and Comfort Cap base allow for versatility in styling and for a comfortable fit.

LENGTH FROM CROWN	LENGTH FROM NAPE	LENGTH FROM SIDE OF HEAD
8"	2"	7"

CAP TYPE: Monofilament Top with Comfort Cap Base

CAP SIZES: Average & Mini Petite

COLOURS:

- Dark Chocolate Mist (G4+)
  - Coffee Mist (G6+)\*
  - Chocolate Copper Mist (G6/30+)
  - Chestnut Mist (G8+)\*
  - Nutmeg Mist (G10+)
  - Cappuccino Mist (G13+)
  - Almond Mist (G14+)
  - Honey Mist (G16+)
  - Praline Mist (G19+)\*
  - Wheat Mist (G20+)
  - Paprika Mist (G30+)\*
  - Platinum Mist (G101+)
- \* Only available in Average



Dark Chocolate Mist



M

2 sizes



Chestnut Mist

Dream Deluxe (CODE: DREA07)

Dream is one of our best selling styles, here it's given an upgrade with a lace front, making it even more natural looking for off the face styling.

LENGTH FROM CROWN	LENGTH FROM NAPE	LENGTH FROM SIDE OF HEAD
4 1/2" - 8 1/2"	2 1/4"	7 1/2"

CAP TYPE: Monofilament Top with a Lace Front and Comfort Cap Base

CAP SIZES: Average

COLOURS:

- Dark Chocolate Mist (G4+)
- Coffee Mist (G6+)
- Chocolate Copper Mist (G630+)
- Chestnut Mist (G8+)
- Nutmeg Mist (G10+)
- Pecan Mist (G12+)
- Cappuccino Mist (G13+)
- Almond Mist (G14+)
- Praline Mist (G19+)
- Wheat Mist (G20+)
- Paprika Mist (G30+)



Wheat Mist

L

M



Coffee Mist

## Discovery (CODE: DISC01)

Discover just how chic a bob can be with this style. The sweeping fringe looks equally elegant pushed back or worn forward.

LENGTH FROM CROWN	LENGTH FROM NAPE	LENGTH FROM SIDE OF HEAD
8 1/2"	3"	5"

**CAP TYPE:** Lace Front with Monofilament Parting and Comfort Cap

**CAP SIZES:** Average

### COLOURS:

- Rich Ebony (G2+)
- Dark Chocolate Mist (G4+)
- Coffee Mist (G6+)
- Chocolate Copper Mist (G630+)
- Chestnut Mist (G8+)
- Nutmeg Mist (G10+)
- Pecan Mist (G12+)
- Cappuccino Mist (G13+)
- Almond Mist (G14+)
- Praline Mist (G19+)
- Wheat Mist (G20+)
- Platinum Mist (G101+)
- Platinum Mist Rooted (G101#10)
- Caramel Glow (CAG)
- Chocolate Glow Rooted (CHG#2)
- Creamy Glow (CRG)
- Rich Chestnut Glow (RCG)
- Strawberry Glow (SWG)
- Burnished Snow Rooted (G60#2)



Caramel Glow



Platinum Mist

Cappuccino Mist

Bliss (CODE: BL)

Razored layers and just the right amount of volume at the crown make this crop pure Bliss. The monofilament top creates parting flexibility whilst the Comfort Cap Base ensures the lightest most comfortable fit.

LENGTH FROM CROWN	LENGTH FROM NAPE	LENGTH FROM SIDE OF HEAD
4"	1"	2-3"

CAP TYPE: Monofilament Top with Comfort Cap Base

CAP SIZES: Petite

COLOURS:

- Dark Chocolate Mist (G4+)
- Pecan Mist (G12+)
- Cappuccino Mist (G13+)
- Almond Mist (G14+)
- Praline Mist (G19+)
- Wheat Mist (G20+)
- Sugared Walnut (G38+)
- Platinum Mist (G101+)

M



Platinum Mist

## Create (CODE: CRTE)

Create is a modern crop with a textured flippy back and soft layers through the front. The sheer monofilament crown allows for the most natural looking movement.

LENGTH FROM CROWN	LENGTH FROM NAPE	LENGTH FROM SIDE OF HEAD
4 1/2"	3 1/2"	4 1/4"

**CAP TYPE:** Monofilament Top with a Comfort Cap

**CAP SIZES:** Petite

### COLOURS:

- Dark Chocolate Mist (G4)
- Chocolate Copper Mist (G630+)
- Nutmeg Mist (G10+)
- Cappuccino Mist (G13+)
- Almond Mist (G14+)
- Praline Mist (G19+)
- Wheat Mist (G20+)
- Platinum Mist (G101+)
- Strawberry Glow (SWG)
- Chocolate Glow (CHG)
- Creamy Glow (CRG)
- Caramel Glow (CAG)
- Rich Chestnut Glow (RCG)



Caramel Glow



M

Chocolate  
Copper  
Mist



## Radiant (CODE: RAD)

A chic short straight cut with a lightly feathered fringe that will enhance your natural radiance. The Monofilament Top ensures the most natural looking movement.

LENGTH FROM CROWN	LENGTH FROM NAPE	LENGTH FROM SIDE OF HEAD
4"	1"	2"

**CAP TYPE:** Monofilament Top with a Comfort Cap Base **CAP SIZES:** Average

### COLOURS:

- Dark Chocolate Mist (G4+)
- Nutmeg Mist (G10+)
- Cappuccino Mist (G13+)
- Almond Mist (G14+)
- Praline Mist (G19+)
- Wheat Mist (G20+)
- Cayenne Mist (G29+)
- Sugared Silver (G56+)
- Burnished Snow (G60+)
- Strawberry Glow (SWG)
- Rich Chestnut Glow (RCG)
- Creamy Glow (CRG)
- Caramel Glow (CAG)



Chocolate  
Copper Mist



Chocolate Glow



M

# Beautiful BOBS

Bobs are chic, easy to wear and ever stylish. Ours are precision cut for extra fashion kudos.

Dark Choc  
Mist

## Tease (CODE: TEAS)

A cute slightly longer bob with a cool girl modern razored fringe.

LENGTH FROM CROWN	LENGTH FROM NAPE	LENGTH FROM SIDE OF HEAD
11" (28cm)	4.5" (11.5cm)	11" (28cm)

**CAP TYPE:** Comfort Cap

**CAP SIZES:** Average

### COLOURS:

- CRG Creamy Glow
- CAG#6 Caramel Glow Rooted
- CHG#2 Chocolate Glow Rooted
- CRG#10 Creamy Glow Rooted
- G60#2 Burnished Snow Rooted
- RCG#4 Rich Chestnut Glow Rooted
- G4 Dark Choc Mist
- G6 Coffee Mist
- G6/30 Chocolate Copper Mist
- G8 Chestnut Mist
- G10 Nutmeg Mist
- G12 Pecan Mist
- G14 Almond Mist
- G16 Honey Mist
- G19 Praline Mist
- G20 Wheat Mist
- G30 Paprika Mist
- G101 Platinum Mist

### NEW COLOUR!

- Onyx Glow (44/38/56)



Burnished Snow Rooted

new

## Composed (CODE: CMPSD)

Composed is a lovely to-the-shoulders bob that has on-trend, barely tousled waves. We love the gently swooping fringe that elegantly swings from the side part.

<b>LENGTH FROM CROWN</b>	<b>LENGTH FROM NAPE</b>	<b>LENGTH FROM SIDE OF HEAD</b>
9"	5"	9 1/2"

**CAP TYPE:** Comfort Cap

**CAP SIZES:** Petite

### COLOURS:

- Onyx Glow (44/38/56)
- Caramel Glow Rooted (CAG#6)
- Chocolate Glow Rooted (CHG#2)
- Creamy Glow (CRG)
- Creamy Glow Rooted (CRG#10)
- Platinum Mist Rooted (G101#10)
- Pecan Mist (G12)
- Almond Mist (G14)
- Praline Mist (G19)
- Wheat Mist (G20)
- Dark Chocolate Mist (G4)
- Burnished Snow Rooted (G60#2)
- Chocolate Copper Mist (G630)
- Chestnut Mist (G8)
- Pearl Platinum (PP)

Onyx Glow



Rich Chestnut Glow Rooted

Platinum Mist Rooted

## Adore (CODE: ADOR)

A choppy slightly waved bob with loads of movement and a lovely sweeping fringe.

Platinum  
Mist Rooted

**LENGTH FROM  
CROWN**  
9"

**LENGTH FROM  
NAPE**  
5"

**LENGTH FROM  
SIDE OF HEAD**  
8"

**CAP TYPE:** Monofilament Part &  
Lace Front with Comfort Cap Base

**CAP SIZES:** Petite

**COLOURS:**

- CAG Caramel Glow
- CRG Creamy Glow
- RCG Rich Chestnut Glow
- SWG Strawberry Glow
- CHG#2 Chocolate Glow Rooted
- CRG#10 Creamy Glow Rooted
- G101#10 Platinum Mist Rooted
- G2 Rich Ebony
- G4 Dark Chocolate Mist
- G6 Coffee Mist
- G8 Chestnut Mist
- G12 Pecan Mist
- G14 Almond Mist
- G19 Praline Mist
- G20 Wheat Mist
- G30 Paprika Mist
- G630 Chocolate Copper Mist

**NEW COLOUR!**

- Onyx Glow (44/38/56)

L

M



Chocolate Copper Mist

Platinum  
Mist Rooted

## Tailored (CODE: TLRD)

Our new fave bob! The assymetric fringe and perfect silhouette are gorgeous on pretty much every face type!

LENGTH FROM CROWN	LENGTH FROM NAPE	LENGTH FROM SIDE OF HEAD
9"	11 1/2"	7 1/2"

**CAP TYPE:** Lace Front with Comfort Cap Base

**CAP SIZES:** Average

### COLOURS:

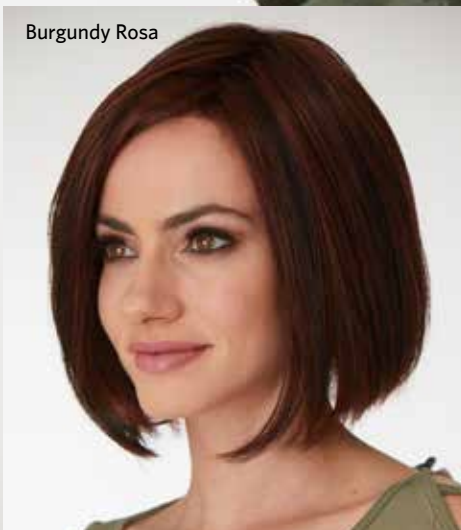
- Onyx Glow (44/38/56)
- Caramel Glow Rooted (CAG#6)
- Choc Glow Rooted (CHG#2)
- Creamy Glow Rooted (CRG#10)
- Platinum Mist Rooted (G101#10)
- Burnished Snow Rooted (G60#2)
- Rich Ebony (G2)
- Dark Choc Mist (G4)
- Choc Copper Mist (G630)
- Chestnut Mist (G8)
- Pecan Mist (G12)
- Praline Mist (G19)
- Wheat Mist (G20)
- Burgundy Rosa (BR)
- Pearl Platinum (PP)

Onyx Glow



L

Burgundy Rosa



# Beautiful BOBS

## Danni (CODE: DNI)

A softly layered and voluminous style with a gently tapered neck and an expert cut make Danni an all time favourite.

LENGTH FROM CROWN	LENGTH FROM NAPE	LENGTH FROM SIDE OF HEAD
3" - 5 1/2"	2"	5 1/2"

**CAP TYPE:** Comfort Cap **CAP SIZES:** Average

### COLOURS:

- Ebony (R2)
- Midnight Brown (R4)
- Chocolate Copper (R6/30)
- Chestnut (R10)
- Ginger Brown (R830)
- Glazed Mocha (R11S)
- Golden Wheat (R14/88)
- Buttered Toast (R1416T)
- Honey Ginger (R14/25)
- Glazed Sand (R1621S)
- Swedish Blonde (R22)
- Glazed Strawberry (R29S)
- Glazed Hazelnut (R829S)
- Auburn Mist (R3027)
- Silver Mist (R56/60)

### 2 NEW COLOURS!

- Onyx Glow (44/38/56)
- Pewter Glow (#61/41)



Auburn Mist



Chocolate Copper

Glazed Sand



## Embrace (CODE: EMB)

Embrace is the perfect straight inverted bob. It's full fringe and precision cut back create a sharp, and chic silhouette.

LENGTH FROM CROWN	LENGTH FROM NAPE	LENGTH FROM SIDE OF HEAD
8"	1"	8"

**CAP TYPE:** Comfort Cap **CAP SIZES:** Average

### COLOURS:

- Pewter Glow (#61/41)
- Espresso (E)
- Cappuccino (C)
- Warm Brown (WB)
- Chocolate Glow (CHG)
- Hazelnut (HAZ)
- Burgundy Rosa (BR)
- Harvest Gold (HG)
- Golden Wheat (GW)
- Caramel Glow (CAG)
- Strawberry Glow (SWG)
- Swedish Blonde (SWB)
- Creamy Glow (CRG)
- Pearl Platinum (PP)
- Butterscotch (B)
- Chocolate Glow Rooted (CHG#2)
- Rich Chestnut Glow (RCG#4)

Pearl Platinum



Pewter Glow



## Elusive (CODE: ELSV)

Fabulous flapper style wavy bob brought up to date with a modern loose curl!

LENGTH FROM CROWN	LENGTH FROM NAPE	LENGTH FROM SIDE OF HEAD
9" (23cm)	4" (10cm)	7" (18cm)

**CAP TYPE:** Comfort Cap

**CAP SIZES:** Average

### COLOURS:

- CRG Creamy Glow
- CAG#6 Caramel Glow Rooted
- CHG#2 Chocolate Glow Rooted
- G101#10 Platinum Mist Rooted
- RCG#4 Rich Chestnut Glow Rooted
- G2 Rich Ebony
- G4 Dark Choc Mist
- G6/30 Chocolate Copper Mist
- G10 Nutmeg Mist
- G14 Almond Mist
- G19 Praline Mist
- G20 Wheat Mist



Platinum Mist Rooted



Rich Chestnut Glow Rooted

Ginger Brown



## Chanelle (CODE: CHL)

An incredibly natural looking mid-length bob with a soft fringe. Easy to wear for any occasion or age group.

LENGTH FROM CROWN	LENGTH FROM NAPE	LENGTH FROM SIDE OF HEAD
3"	1 1/2"	2"

**CAP TYPE:** Monofilament Parting with Comfort Cap Base

**CAP SIZES:** Average

### COLOURS:

- Chocolate Copper (JRD630)
- Ginger Brown (JRD 830)
- Golden Walnut (1416T)
- Soft Flame (SF33/24)
- Soft Honey (SF12/28)
- Sunkissed Blonde (SF16/88)
- Platinum Lights (SF613/12)
- Golden Lights (SF613/14)

M



Golden Walnut

new

## Empathy (CODE: EPTHY)

Empathy is a sweet, short page-boy cut that has an elegant swooping fringe. The mini 1/2 moon lace front creates a natural hair-line, just where it is needed.

LENGTH FROM CROWN	LENGTH FROM NAPE	LENGTH FROM SIDE OF HEAD
5 1/2"	11 1/2"	5"

**CAP TYPE:** 1/2 Moon lace front, Comfort Cap Base

**CAP SIZES:** Petite

**COLOURS:**

- Pewter Glow (#61/41)
- Onyx Glow (44/38/56)
- Caramel Glow Rooted (CAG#6)
- Creamy Glow Rooted (CRG#10)
- Nutmeg Mist (G10)
- Cappuccino Mist (G13)
- Almond Mist (G14)
- Praline Mist (G19)
- Wheat Mist (G20)
- Coffee Mist (G6)
- Burnished Snow Rooted (G60#2)
- Chocolate Copper Mist (G630)
- Pearl Platinum (PP)

L



Pearl Platinum



Onyx Glow



Almond Mist



## Coming Up Rosy (CODE: CUR)

This fun new bob comes in a fabulous rooted Rose Gold. We love the funky fringe & pretty tousled waves. Wear it with your bestie!

LENGTH FROM CROWN	LENGTH FROM NAPE	LENGTH FROM SIDE OF HEAD
8"	5 1/2"	8"

**CAP TYPE:** Comfort Cap **CAP SIZES:** Average

**COLOURS:**

- Rose Gold Rooted (RG#8)



Rose Gold Rooted

new



# Lovely LENGTHS

Gorgeous long locks will always be in fashion, whether softly curled, bouncy & wavy or poker straight

Chocolate  
Copper Mist

new

## Edition (CODE: EDTN)

Edition is a sleek long style that falls to the middle of the back. The dramatic swooping fringe is enhanced by the mini 1/2 moon lace front, which creates a natural looking hairline.

LENGTH FROM CROWN	LENGTH FROM NAPE	LENGTH FROM SIDE OF HEAD
12 1/2"	12 1/2"	14"

**CAP TYPE:** 1/2 Moon lace front, Comfort Cap Base

**CAP SIZES:** Average

### COLOURS:

- Burgundy Rosa (BR)
- Caramel Glow Rooted (CAG#6)
- Creamy Glow (CRG)
- Creamy Glow Rooted (CRG#10)
- Platinum Mist Rooted (G101#10)
- Almond Mist (G14)
- Praline Mist (G19)
- Rich Ebony (G2)
- Wheat Mist (G20)
- Dark Chocolate Mist (G4)
- Coffee Mist (G6)
- Burnished Snow Rooted (G60#2)
- Chocolate Copper Mist (G630)
- Chestnut Mist (G8)
- Swedish Blonde (SWB)

L



Creamy Glow





## Motif (CODE: MTF)

A fabulously curled longer style with a full soft fringe makes Motif super pretty to wear & perfect for wearing everyday or out on the town!

LENGTH FROM CROWN	LENGTH FROM NAPE	LENGTH FROM SIDE OF HEAD
12"	10"	12"

**CAP TYPE:** Comfort Cap

**CAP SIZES:** Petite

### COLOURS:

- Burgundy Rosa (BR)
- Caramel Glow Rooted (CAG#6)
- Creamy Glow (CRG)
- Creamy Glow Rooted (CRG#10)
- Platinum Mist Rooted (G101#10)
- Almond Mist (G14)
- Praline Mist (G19)
- Rich Ebony (G2)
- Wheat Mist (G20)
- Dark Chocolate Mist (G4)
- Coffee Mist (G6)
- Burnished Snow Rooted (G60#2)
- Chocolate Copper Mist (G630)
- Chestnut Mist (G8)
- Pearl Platinum (PP)
- Swedish Blonde (SWB)

Swedish  
Blonde



Praline Mist

## Crystal (CODE: CRY)

Crystal is a stunning long and layered wig with lots of texture and feathered flicks which create natural movement and bounce. The result is a comfortable, eye-catching look which creates a stunning silhouette.

LENGTH FROM CROWN	LENGTH FROM NAPE	LENGTH FROM SIDE OF HEAD
13 3/4" - 9"	10"	8"

**CAP TYPE:** Monofilament Parting with Comfort Cap Base

**CAP SIZES:** Average

### COLOURS:

- Espresso (E)
- Cappuccino (C)
- Chocolate Copper (CHC)
- Warm Brown (WB)
- Ginger Brown (GB)
- Glazed Mocha (GM)
- Harvest Gold (HG)
- Butterscotch (B)
- Vanilla Lush (VL)
- Swedish Blonde (SWB)

M



Glazed Mocha



Chocolate Copper

## Beverley (CODE: BEV)

An extremely versatile style featuring a side-swept fringe and lots of feathered layers at the front to frame the face.

LENGTH FROM CROWN	LENGTH FROM NAPE	LENGTH FROM SIDE OF HEAD
11"	13"	15"

**CAP TYPE:** Comfort Cap

**CAP SIZES:** Average

### COLOURS:

- Midnight (1B)
- Midnight Brown (R4)
- Chocolate Copper (R6/30)
- Ginger Brown (R830)
- Chestnut (R10)
- Glazed Mocha (R11S)
- Golden Wheat (R14/88)
- Buttered Toast (R1416T)
- Blonde Chocolate (P14)



Golden Wheat



Blonde Chocolate



Glazed Mocha

new

Platinum Mist  
Rooted

## Opportunity (CODE: OPTY)

With a softly razored fringe that can be worn as fashionable 'Curtain bangs' or worn swept to one side. This longer style has pretty 'tongued' lengths that are on-trend & so easy to wear!

LENGTH FROM CROWN	LENGTH FROM NAPE	LENGTH FROM SIDE OF HEAD
12 1/2"	12 1/2"	12 1/2"

**CAP TYPE:** Comfort Cap

**CAP SIZES:** Average

### COLOURS:

- Caramel Glow Rooted (CAG#6)
- Chocolate Glow Rooted (CRG#2)
- Creamy Glow Rooted (CRG#10)
- Platinum Mist Rooted (G101#10)
- Almond Mist (G14)
- Praline Mist (G19)
- Rich Ebony (G2)
- Wheat Mist (G20)
- Dark Chocolate Mist (G4)
- Coffee Mist (G6)
- Chocolate Copper Mist (G630)
- Swedish Blonde (SWB)



Chocolate Glow Rooted

## Mysterious (CODE: MYST)

A fab & easy to wear long straight style with gentle layers through the ends. The heavy fringe is on trend & funky too!

**LENGTH FROM CROWN**

11 1/2"

**LENGTH FROM NAPE**

6"

**LENGTH FROM SIDE OF HEAD**

9"

**CAP TYPE:** Comfort Cap

**CAP SIZES:** Average

### COLOURS:

- Caramel Glow Rooted (CAG#6)
- Choc Glow Rooted (CHG#2)
- Rich Chestnut Glow Rooted (RCG#4)
- Creamy Glow Rooted (CRG#10)
- Platinum Mist Rooted (G101#10)
- Burnished Snow Rooted (G60#2)
- Rich Ebony (G2)
- Dark Choc Mist (G4)
- Chocolate Copper Mist (G630)
- Chestnut Mist (G8)
- Pecan Mist (G12)
- Praline Mist (G19)
- Wheat Mist (G20)
- Paprika Mist (G30)
- Swedish Blonde

Swedish  
Blonde



Dark Chocolate Mist

Creamy  
Glow  
Rooted

## Josephine (CODE: JOSE)

A modern way to wear lush long cascading waves.

LENGTH FROM CROWN	LENGTH FROM NAPE	LENGTH FROM SIDE OF HEAD
15.5" (39cm)	16" (40cm)	16" (40cm)

**CAP TYPE:** Comfort Cap

**CAP SIZES:** Average

### COLOURS:

- CRG Creamy Glow
- SWG Strawberry Glow
- CAG#6 Caramel Glow Rooted
- CHG#2 Chocolate Glow Rooted
- CRG#10 Creamy Glow Rooted
- G101#10 Platinum Mist Rooted
- RCG#4 Rich Chestnut Glow Rooted
- G2 Rich Ebony
- G4 Dark Choc Mist
- G6/30 Chocolate Copper Mist
- G19 Praline Mist
- G20 Wheat Mist
- G30 Paprika Mist



Caramel Glow Rooted



Rich Chestnut Glow CRooted



# Short CUTS

Whether you go for asymmetric styling, a pixie crop or a cut with loads of volume, a short cut will ensure you stand out from the crowd.



Pecan Mist



Praline Mist



Pewter Glow

## Sprite (CODE: SPRI)

The perfect super short, pixie crop, with a gently tapered nape and a lace front for a very natural hairline.

LENGTH FROM CROWN	LENGTH FROM NAPE	LENGTH FROM SIDE OF HEAD
4"	2"	2"

**CAP TYPE:** Lace Front with Monofilament Crown and Comfort Cap

**CAP SIZES:** Mini Petite

### COLOURS:

- Pewter Glow (#61/41)
- Dark Chocolate Mist (G4+)
- Coffee Mist (G6+)
- Chocolate Copper Mist (G6/30+)
- Chestnut Mist (G8+)
- Pecan Mist (G12+)
- Almond Mist (G14+)
- Praline Mist (G19+)
- Wheat Mist (G20+)
- Paprika Mist (G30+)
- Platinum Mist (G101+)

L

M



Praline Mist

## Admiration (CODE: ADMI01)

A chic cropped wig with a sweeping fringe. The lace front and expert styling make this a style people will truly admire.

LENGTH FROM CROWN	LENGTH FROM NAPE	LENGTH FROM SIDE OF HEAD
5 1/4"	1 3/4"	3 1/2"

**CAP TYPE:** Lace Front with Monofilament Crown and Comfort Cap

**CAP SIZES:** Average

### COLOURS:

- Dark Chocolate Mist (G4+)
- Coffee Mist (G6+)
- Chocolate Copper Mist (G630+)
- Chestnut Mist (G8+)
- Nutmeg Mist (G10+)
- Pecan Mist (G12+)
- Cappuccino Mist (G13+)
- Almond Mist (G14+)
- Praline Mist (G19+)
- Wheat Mist (G20+)
- Platinum Mist (G101)
- Caramel Glow (CAG)
- Creamy Glow (CRG)
- Rich Chestnut Glow (RCG)
- Strawberry Glow (SWG)

L

M



Pecan Mist



## April (CODE: APR)

This short, feathered wig is one of our customer favourites! Ruffle through with the fingers for a striking, spiky look or smooth down for a sleek, pixie look.

**LENGTH FROM CROWN** 2 1/4" - 4" **LENGTH FROM NAPE** 1 3/4" **LENGTH FROM SIDE OF HEAD** 2 3/4"

**CAP TYPE:** Comfort Cap

**CAP SIZES:** Petite & Average

### COLOURS:

- Glazed Mocha (GM)
- Butterscotch (B)
- Cappuccino (C)
- Chocolate Copper (CHC)
- Ginger Brown (GB)
- Light Chocolate/Candy Blonde (LC/CB)
- Paprika Root (PR)
- Mink (38)
- Silver Mist (56/60)
- Soft Copper (SF33/29)
- Harvest Gold (HG)
- Vanilla Lush (VL)

### 2 NEW COLOURS!

- Onyx Glow (44/38/56)
- Pewter Glow (#61/41)



Cappuccino



Silver Mist

2 sizes



Pewter Glow

## April Deluxe (CODE: APRD)

April with an upgrade! April is one of our all time best sellers, and has the same great shape, but with this version you have the added feature of a Lace Front for a very natural hairline!

**LENGTH FROM CROWN** 4" **LENGTH FROM NAPE** 1 1/2" **LENGTH FROM SIDE OF HEAD** 3 1/2"

**CAP TYPE:** Lace Front with Monofilament Crown and Comfort Cap

**CAP SIZES:** Average & Petite

### COLOURS:

- Glazed Mocha (GM)
- Cappuccino (C)
- Chocolate Copper (CHC)
- Ginger Brown (GB)
- Light Chocolate/Candy Blonde (LC/CB)
- Mink (38)
- Silver Mist (56/60)
- Soft Copper (SF33/29)
- Harvest Gold (HG)
- Vanilla Lush (VL)

### 2 NEW COLOURS!

- Onyx Glow (44/38/56)
- Pewter Glow (#61/41)

2 sizes

L

M



Harvest Gold

## Instinct (CODE: INS)

One of the most popular short styles in our collection, Instinct is a lightweight, comfortable piece that is incredibly easy to wear and to style. A multitude of wispy layers at the fringe combined with lots of height at the crown create a sophisticated look that looks salon-styled.

LENGTH FROM CROWN	LENGTH FROM NAPE	LENGTH FROM SIDE OF HEAD
3 1/2"	2 3/4"	3 1/4"

**CAP TYPE:** Comfort Cap **CAP SIZES:** Petite

### COLOURS:

- Chocolate Copper (L6/30)
- Chocolate Copper Mist (G630+)
- Ginger Brown (LG830)
- Cappuccino Mist (G13+)
- Buttered Toast (LR1416)
- Buttered Toast Mist (G15+)
- Wheat Mist (G20+)
- Butterscotch Mist (G25+)
- Ginger Mist (G27+)
- Sugared Almond (G58+)
- Dark Copper Mist (G130+)
- Chianti Mist (G135+)
- Walnut Mist (48C)
- Platinum White (56/60)



Chianti Mist



Buttered Toast Mist

## Fresh Start (CODE: FSS)

All-over precision layers, a soft, wispy fringe and a stunning silhouette define Fresh Start. A wig that will get heads turning.

LENGTH FROM CROWN	LENGTH FROM NAPE	LENGTH FROM SIDE OF HEAD
5 1/4"	2 1/4"	5 1/4"

**CAP TYPE:** Comfort Cap **CAP SIZES:** Average

### COLOURS:

- Dark Chocolate Mist (G4+)
- Coffee Mist (G6+)
- Chocolate Copper Mist (G630+)
- Dark Cinnamon Mist (G829S+)
- Nutmeg Mist (G10+)
- Cappuccino Mist (G13+)
- Buttered Toast Mist (G15+)
- Praline Mist (G19+)
- Wheat Mist (G20+)
- Ginger Mist (G27+)
- Paprika Mist (G30+)
- Sugared Silver (G56+)



Cappuccino Mist



Praline Mist



## Audacious (CODE: AUDC)

A cute crop with plenty of volume & a slightly fluffed back. This piece is particularly beautiful in real life as it has wonderful movement to it!

LENGTH FROM CROWN	LENGTH FROM NAPE	LENGTH FROM SIDE OF HEAD
4"	3"	4"

**CAP TYPE:** Comfort Cap

**CAP SIZES:** Average

### COLOURS:

- Onyx Glow (44/38/56)
- Burgundy Rosa (BR)
- Caramel Glow Rooted (CAG#6)
- Choc Glow Rooted (CHG#2)
- Creamy Glow Rooted (CRG#10)
- Platinum Mist Rooted (G101#10)
- Rich Ebony (G2)
- Dark Choc Mist (G4)
- Chocolate Copper Mist (G630)
- Chestnut Mist (G8)
- Pecan Mist (G12)
- Cappuccino Mist (G13)
- Praline Mist (G19)



Chestnut Mist



Onyx Glow

## Zara (CODE: ZR)

A classic, short boy cut with lots of wispy layers and a soft fringe define Zara – a style which is suitable for all age-groups and face-shapes. The Comfort Cap features lots of lightweight, stretch wefts to ensure a comfortable fit.

LENGTH FROM CROWN	LENGTH FROM NAPE	LENGTH FROM SIDE OF HEAD
4"	2 1/4"	2"

**CAP TYPE:** Comfort Cap **CAP SIZES:** Petite

### COLOURS:

- Coffee Mist (G6+)
- Nutmeg Mist (G10+)
- Pecan Mist (G12+)
- Cappuccino Mist (G13+)
- Almond Mist (G14+)
- Honey Mist (G16+)
- Praline Mist (G19+)
- Wheat Mist (G20+)
- Cayenne Mist (G29+)
- Sugared Silver (G56+)
- Burnished Snow (G60+)
- Platinum Mist (G101+)



Almond Mist



Platinum Mist



Harvest Gold

## Jaimie (CODE: JME)

A timeless short cut style featuring a barely-there fringe and lots of spiky layers which create intense volume at the crown.

LENGTH FROM CROWN	LENGTH FROM NAPE	LENGTH FROM SIDE OF HEAD
2"	1"	2"

**CAP TYPE:** Comfort Cap

**CAP SIZES:** Petite

### COLOURS:

- Marble Brown (MB)
- Harvest Gold (HG)
- Vanilla Lush (VL)
- Cappuccino (4)
- Soft Mahogany (SF6/130)
- Soft Glazed Honey (SF13/16)
- Soft Silvery Moon (SF 51/60)
- Golden Lights (SF613/14)
- Soft Flame (SF33/24)



Soft Flame

## Celine (CODE: CLN)

Celine is a beautifully cut style with lots of layers for optimum volume and movement, combined with a soft, wispy fringe.

LENGTH FROM CROWN	LENGTH FROM NAPE	LENGTH FROM SIDE OF HEAD
4 3/4"	1 1/2"	3"

**CAP TYPE:** Comfort Cap **CAP SIZES:** Petite

### COLOURS:

- Coffee Mist (G6+)
- Nutmeg Mist (G10+)
- Pecan Mist (G12+)
- Cappuccino Mist (G13+)
- Almond Mist (G14+)
- Honey Mist (G16+)
- Praline Mist (G19+)
- Wheat Mist (G20+)
- Ginger Mist (G27+)
- Burnished Snow (G60+)
- Platinum Mist (G101+)

Almond Mist



Cappuccino Mist



Almond  
Mist

## Harwood (CODE: HRW)

A close-to-the-head, cropped version of the timeless pixie cut – Harwood features lots of wispy layers at the crown and a nape-hugging neck. The Monofilament Crown will allow you to style the hair in any direction whilst the Comfort Cap Base will create a cool, comfortable and flawless fit.

LENGTH FROM CROWN	LENGTH FROM NAPE	LENGTH FROM SIDE OF HEAD
4"	1 1/2"	4"

**CAP TYPE:** Lace Front with a Monofilament Crown and Comfort Cap Base

**CAP SIZES:** Average and Mini Petite

**COLOURS:**

- Dark Chocolate Mist (G4+)\*
- Chocolate Copper Mist (G6/30+)
- Nutmeg Mist (G10+)
- Cappuccino Mist (G13+)
- Almond Mist (G14+)
- Honey Mist (G16+)
- Praline Mist (G19+)
- Wheat Mist (G20+)
- Cayenne Mist (G29+)\*
- Burnished Snow (G60+)
- Platinum Mist (G101+)

\* Only available in Average

L

M

2  
sizes

Nutmeg Mist

# Classic LUXURY

Classic shapes and styles, all with added luxury details such as 100% hand-tied caps, monofilament tops, or lace fronts. Luxury never goes out of fashion.

Caramel Glow  
Rooted

## Perspective (CODE: PSPT)

This style is designed to be worn brushed back off the face, or swept forward. So chic & so pretty to wear!

LENGTH FROM CROWN	LENGTH FROM NAPE	LENGTH FROM SIDE OF HEAD
5"	1"	3"

**CAP TYPE:** 100% hand tied, monofilament top & Lace front

**CAP SIZE:** Petite

### COLOURS:

- Pewter Glow (#61/41)
- Caramel Glow Rooted (CAG#6)
- Creamy Glow Rooted (CRG#10)
- Chocolate Copper Mist (G630)
- Nutmeg Mist (G10)
- Pecan Mist (G12)
- Cappuccino Mist (G13)
- Praline Mist (G19)
- Sugared Walnut (G38)
- Sugared Silver (G56)
- Burnished Snow (G60)
- Platinum Mist (G101)
- Burnished Snow Rooted (G60#2)

L

M

H



Pewter Glow



Praline Mist

new

## Realize (CODE: RLZE)

Realize is a chic short bob with a softly swooping fringe & layered stacked back. The elegant silhouette is enhanced by the lace front & monofilament part for a beautiful natural look.

LENGTH FROM CROWN	LENGTH FROM NAPE	LENGTH FROM SIDE OF HEAD
4"	1 1/2"	4"

**CAP TYPE:** Lace Front, Mono Part, Comfort Cap base

**CAP SIZES:** Petite

### COLOURS:

- Pewter Glow (#61/41)
- Onyx Glow (44/38/56)
- Platinum Mist (G101)
- Pecan Mist (G12)
- Cappuccino Mist (G13)
- Almond Mist (G14)
- Praline Mist (G19)
- Wheat Mist (G20)
- Dark Chocolate Mist (G4)
- Chocolate Copper Mist (G630)

L  
M

Wheat Mist



Pewter Glow



Believe (CODE: BLVE)

A classic crop with plenty of barely waved volume. This style features a lace front that creates a remarkably natural hairline.

LENGTH FROM CROWN	LENGTH FROM NAPE	LENGTH FROM SIDE OF HEAD
2 3/4"	2 1/2"	2 1/2"

CAP TYPE: Lace Front with a Comfort Cap Base

CAP SIZES: Average

COLOURS:

- Dark Chocolate Mist (G4+)
- Chocolate Copper Mist (G630+)
- Nutmeg Mist (G10+)
- Pecan Mist (G12)
- Cappuccino Mist (G13+)
- Almond Mist (G14+)
- Praline Mist (G19+)
- Wheat Mist (G20+)
- Sugared Walnut (G38+)
- Sugared Almond (G56+)
- Burnished Snow (G60+)
- Platinum Mist (G101+)

Dark Chocolate Mist



Sugared Almond



Daring (CODE: DARG)

A super short crop that is straight yet has lots of volume. This style is 100% hand tied and easy to wear!

LENGTH FROM CROWN	LENGTH FROM NAPE	LENGTH FROM SIDE OF HEAD
3"	1 1/4"	2"

CAP TYPE: 100% hand tied, monofilament top & Lace front

CAP SIZES: Petite

COLOURS:

- Onyx Glow (44/38/56)
- Creamy Glow Rooted (CRG#10)
- Nutmeg Mist (G10)
- Platinum Mist (G101)
- Platinum Mist Rooted (G101#10)
- Pecan Mist (G12)
- Cappuccino Mist (G13)
- Praline Mist (G19)
- Sugared Walnut (G38)
- Sugared Silver(G56)
- Burnished Snow (G60)
- Burnished Snow Rooted (G60#2)

L

M

H

Nutmeg Mist



Platinum Mist



Pewter Glow

new

## Resonate (CODE: RSNT)

A luxurious bob with a beautiful longer front that can be tucked back behind the ears. The classic bob silhouette is chic & elegant and is perfectly shaped to enhance your beautiful features.

LENGTH FROM CROWN	LENGTH FROM NAPE	LENGTH FROM SIDE OF HEAD
5"	1"	5"

**CAP TYPE:** Lace Front, Mono Part, Comfort Cap base

**CAP SIZES:** Average

### COLOURS:

- Pewter Glow (#61/41)
- Onyx Glow (44/38/56)
- Caramel Glow Rooted (CAG#6)
- Creamy Glow Rooted (CRG#10)
- Nutmeg Mist (G10)
- Platinum Mist (G101)
- Platinum Mist Rooted (G101#10)
- Almond Mist (G14)
- Praline Mist (G19)
- Wheat Mist (G20)
- Dark Chocolate Mist (G4)
- Coffee Mist (G6)
- Chocolate Copper Mist (G630)

L M



Platinum Mist



Sugared Silver

## Delight (CODE: DLGT)

A chic short bob with a soft silhouette and side swept fringe. 100% hand tied cap & lace front for that added extra luxury.

LENGTH FROM CROWN	LENGTH FROM NAPE	LENGTH FROM SIDE OF HEAD
6" (15cm)	1.5" (4cm)	5.5" (14cm)

**CAP TYPE:** Lace Front, Monofilament top and 100% hand tied cap.

**CAP SIZES:** Petite

**COLOURS:**

- CRG Creamy Glow
- CAG#6 Caramel Glow Rooted
- CRG#10 Creamy Glow Rooted
- G6 Coffee Mist
- G6/30 Chocolate Copper Mist
- G8 Chestnut Mist
- G12 Pecan Mist
- G14 Almond Mist
- G19 Praline Mist
- G20 Wheat Mist
- G38 Sugared Walnut
- G56 Sugared Silver
- G101 Platinum Mist



Creamy Glow

## Pearl (CODE: PEA)

The perfect short cut wig featuring lots of soft layers and a light fringe. Pearl is easy to style, incredibly comfortable to wear and flattering for a range.

LENGTH FROM CROWN	LENGTH FROM NAPE	LENGTH FROM SIDE OF HEAD
11/2"	4"	3"

**CAP TYPE:** Monofilament Top with a Comfort Cap Base

**CAP SIZES:** Average

**COLOURS:**

- Brazil Nut (8)
- Pecan (12)
- Ash Brown (14)
- Sahara (1822)
- Mink (38)
- Silver Mink (48)
- Platinum Grey (56)
- Frosted Pearl (17/101)

M



Pecan



Platinum Grey



## Constant (CODE: CNST)

A full yet barely waved short style with the added luxury of a deep lace front for a natural hairline, and a Hand Knotted Top.

LENGTH FROM CROWN	LENGTH FROM NAPE	LENGTH FROM SIDE OF HEAD
4 1/2"	3"	3"

**CAP TYPE:** Lace Front with a Hand Knotted Top & Comfort Cap Base

**CAP SIZES:** Average

### COLOURS:

- Dark Chocolate Mist (G4+)
- Chocolate Copper Mist (G630+)
- Nutmeg Mist (G10+)
- Pecan Mist (G12)
- Cappuccino Mist (G13+)
- Almond Mist (G14+)
- Praline Mist (G19+)
- Wheat Mist (G20+)
- Sugared Walnut (G38+)
- Sugared Silver (G56)
- Burnished Snow (G60+)
- Platinum Mist (G101+)

L

H



Sugared Walnut



Pecan Mist





Chocolate  
Copper Mist

## Charm (CODE: CHAR12)

Full of volume, this wig has a beautiful shape whether you ruffle the back or smooth it down. The Lace Front ensures this is a perfectly natural style.

LENGTH FROM CROWN	LENGTH FROM NAPE	LENGTH FROM SIDE OF HEAD
4 1/2"	2 3/4"	3 1/2"

**CAP TYPE:** Lace Front with Monofilament Parting and Comfort Cap

**CAP SIZES:** Average

### COLOURS:

- Dark Chocolate Mist (G4+)
- Coffee Mist (G6+)
- Chocolate Copper Mist (G630)
- Nutmeg Mist (G10+)
- Pecan Mist (G12+)
- Cappuccino Mist (G13+)
- Almond Mist (G14+)
- Praline Mist (G19+)
- Wheat Mist (G20+)
- Sugared Walnut (G38+)
- Sugared Silver (G56+)
- Burnished Snow (G60+)

### 2 NEW COLOURS!

- Onyx Glow (44/38/56)
- Pewter Glow (#61/41)



Wheat Mist

## Sally Deluxe (CODE: SLYD)

Sally is one of our most loved cropped styles. The updated lace front will make her even more adored, as it gives a natural hairline, to add to her other luxury features.

LENGTH FROM CROWN	LENGTH FROM NAPE	LENGTH FROM SIDE OF HEAD
3 1/2"	1 1/2"	3"

**CAP TYPE:** 100% Hand Tied with a Lace Front **CAP SIZES:** Average

### COLOURS:

- Cappuccino (4)
- Brazil Nut (8)
- Ash Brown (14)
- Shaded Blonde (JS124)
- Golden Wheat (1488)
- Mink (38)
- Silver Mist (56/60)
- Frosted Pearl (17/101B)
- Creamy Glow (CRG)
- Golden Lights (SF613/14)
- Harvest Gold (HG)
- Pearl (101)



Harvest Gold



Pearl

## Sally (CODE: SLY)

A feather-light, sassy pixie cut featuring light layers and a soft fringe makes Sally the perfect choice for anyone seeking comfort and style.

LENGTH FROM CROWN	LENGTH FROM NAPE	LENGTH FROM SIDE OF HEAD
3 1/2"	1 1/2"	3"

**CAP TYPE:** Hand-tied Cap **CAP SIZES:** Petite

### COLOURS:

- Cappuccino (4)
- Brazil Nut (8)
- Pecan (12)
- Ash Brown (14)
- Shaded Blonde (JS124)
- Golden Wheat (1488)
- Mink (38)
- Silver Mist (56/60)
- Frosted Pearl (17/101)
- Soft Mahogany (SF6/130)
- Golden Lights (SF613/14)
- Harvest Gold (HG)



Mink

H



Frosted Pearl

## Sue (CODE: SUE)

A sweet, sassy and modern wig – Sue features expertly cut, voluminous layers and a fringe which can be brushed forwards or worn to the side.

LENGTH FROM CROWN	LENGTH FROM NAPE	LENGTH FROM SIDE OF HEAD
1 3/4" – 4"	2 3/4"	3 1/4"

**CAP TYPE:** Monofilament Top with a Comfort Cap Base

**CAP SIZES:** Average

### COLOURS:

- Chocolate Copper (R6/30)
- Glazed Hazelnut (R829S)
- Ginger Brown (R830)
- Glazed Mocha (R11S)
- Buttered Toast (R1416T)
- Golden Wheat (R14/88)
- Glazed Sand (R1621S)
- Auburn Mist (R30/27H)
- Smoked Walnut (R38)
- Silver Mist (R56/60)

M

Glazed  
Hazelnut



## Elegance (CODE: ZELE)

A classic short wig style featuring short, wavy layers, a soft fringe and longer layers at the sides of the ears.

LENGTH FROM CROWN	LENGTH FROM NAPE	LENGTH FROM SIDE OF HEAD
3"	2"	4"

**CAP TYPE:** 100% Hand Knotted Cap **CAP SIZES:** Average

### COLOURS:

- Brazil Nut (JR8)
- Walnut (JR10)
- Ash Brown (JR14)
- Sahara (1822)
- Mink (JR38)
- Silver Mink (JR48)
- Platinum Grey (JR56)
- Snow White (JR60)
- Frosted Pearl (17/101)
- Snow White (60)

H

Platinum  
Grey



## Perception (CODE: PCEPT)

A new look for the classic fluff back cut, barely waved and with a deep lace front for the most natural hairline.

LENGTH FROM CROWN	LENGTH FROM NAPE	LENGTH FROM SIDE OF HEAD
4 3/4"	2 1/2"	3 1/2"

**CAP TYPE:** Lace Front with a Hand Knotted Top & Comfort Cap Base

**CAP SIZES:** Average

### COLOURS:

- Chocolate Copper Mist (G630+)
- Nutmeg Mist (G10+)
- Pecan Mist (G12)
- Cappuccino Mist (G13+)
- Almond Mist (G14+)
- Praline Mist (G19+)
- Wheat Mist (G20+)
- Sugared Walnut (G38+)
- Sugared Almond (G56+)
- Burnished Snow (G60+)
- Platinum Mist (G101+)



Praline Mist



Burnished Snow



Balance (CODE: BALA01)

An expertly cut pixie with just the right amount of volume. The lace front ensures this style looks completely natural.

LENGTH FROM CROWN	LENGTH FROM NAPE	LENGTH FROM SIDE OF HEAD
3 3/4"	2 1/2"	3"

CAP TYPE: Lace Front with Monofilament Top and Comfort Cap

CAP SIZES: Petite

COLOURS:

- Coffee Mist (G6+)
  - Chocolate Copper Mist (G630+)
  - Chestnut Mist (G8+)
  - Nutmeg Mist (G10+)
  - Pecan Mist (G12+)
  - Cappuccino Mist (G13+)
  - Almond Mist (G14+)
  - Praline Mist (G19+)
  - Wheat Mist (G20+)
  - Paprika Mist (G30+)
  - Sugared Silver (G56+)
  - Platinum Mist (G101+)
- 2 NEW COLOURS!**
- Onyx Glow (44/38/56)
  - Pewter Glow (#61/41)



Serene (CODE: SRN)

A sleek, ready-to-wear wig with a side-swept fringe and voluminous layers at the back make Serene a fashionable choice for anyone seeking a comfortable, easy-to-wear style.

LENGTH FROM CROWN	LENGTH FROM NAPE	LENGTH FROM SIDE OF HEAD
2 1/2"	5"	5 1/2"

CAP TYPE: Lace Front with a Comfort Cap Base

CAP SIZES: Average

COLOURS:

- Dark Chocolate Mist (G4+)
- Coffee Mist (G6+)
- Chocolate Copper Mist (G6/30+)
- Dark Cinnamon Mist (G829+)
- Nutmeg Mist (G10+)
- Cappuccino Mist (G13+)
- Buttered Toast Mist (G15+)
- Praline Mist (G19+)
- Wheat Mist (G20+)
- Ginger Mist (G27+)
- Sugared Silver (G56+)



Cappuccino Mist



## Eternity (CODE: ETY)

Eternity features contemporary fluff-styling and a beautifully voluminous crown, creating a chic and sophisticated silhouette. The lightweight, 100% hand-tied back is contoured to provide you with a perfect fit whilst the monofilament top and lace front allow for ultimate ease in styling and comfort for everyday wear.

LENGTH FROM CROWN	LENGTH FROM NAPE	LENGTH FROM SIDE OF HEAD
6"	4"	4"

**CAP TYPE:** Monofilament Top with Lace Front, Hand Knotted Base with contouring across the back. Velvet lined ear tabs & back of neck.

**CAP SIZES:** Average

### COLOURS:

- Coffee Mist (G6+)
- Cappuccino Mist (G13+)
- Praline Mist (G19+)
- Wheat Mist (G20+)
- Ginger Mist (G27+)
- Burnished Snow (G60+)
- Platinum Mist (G101+)
- Chianti Mist (G135+)



Praline Mist



Platinum Mist



## Imagine (CODE: IMGN)

This classic textured crop features a hand knotted top section which is not only lightweight but gives gorgeous natural looking movement.

LENGTH FROM CROWN	LENGTH FROM NAPE	LENGTH FROM SIDE OF HEAD
4"	1 3/4"	2 1/4"

**CAP TYPE:** Hand Knotted Top with a Comfort Cap Base

**CAP SIZES:** Petite

### COLOURS:

- Dark Chocolate Mist (G4+)
- Nutmeg Mist (G10+)
- Pecan Mist (G12+)
- Cappuccino Mist (G13+)
- Almond Mist (G14+)
- Praline Mist (G19+)
- Wheat Mist (G20+)
- Sugared Walnut (G38+)
- Sugared Almond (G56+)
- Burnished Snow (G60+)
- Platinum Mist (G101+)
- Chocolate Copper Mist (G630+)

H

Sugared Walnut



Burnished Snow



# THE NEW Classics

Introducing our New Classic wigs. Created for the modern woman, with lace front detailing and chic, easy to wear cuts inspired by some of our best loved and eternally stylish icons; Judy Dench, Julie Andrews & Helen Mirren.

## Iconic (CODE: ICON)

We think this chic crop will go on to become... well - Iconic! It's not often that we all agree a style will be a winner, but with the perfectly shaped cut, this one has wowed our whole team, and is bound to be beloved by all.

LENGTH FROM CROWN	LENGTH FROM NAPE	LENGTH FROM SIDE OF HEAD
4"	11/2"	3"

**CAP TYPE:** Lace Front with Comfort Cap

**CAP SIZES:** Average

### COLOURS:

- Midnight Brown (R4)
- Chocolate Copper (R6/30)
- Glazed Hazelnut (R829S)
- Ginger Brown (R830)
- Chestnut (R10)
- Glazed Mocha (R11S)
- Golden Wheat (R14/88)
- Buttered Toast (R1416)
- Honey Ginger (R14/25)
- Glazed Sand (R1621S)
- Glazed Vanilla (R23S)
- Glazed Fire (R28S)
- Glazed Strawberry (R29S)
- Smoked Walnut (R38)
- Silver Mist (R56/60)

### 2 NEW COLOURS!

- Onyx Glow (44/38/56)
- Pewter Glow (#61/41)

I



Onyx Glow

Pewter  
Glow



Silver  
Mist



## Refresh (CODE: REFR02)

This style was inspired by a great British Icon, Judy Dench! Her chic crop is so stylish, we thought it would be perfect created as an elfin wig. The added touch of a lace front means this style is so natural, no one will be able to tell you're wearing a wig.

LENGTH FROM CROWN	LENGTH FROM NAPE	LENGTH FROM SIDE OF HEAD
3 1/2"	1 3/4"	2 1/4"

**CAP TYPE:** Lace Front with Monofilament Crown and Comfort Cap

**CAP SIZES:** Petite

### COLOURS:

- G4 Dark Chocolate Mist
- G6 Coffee Mist
- G630 Chocolate Copper Mist
- G8 Chestnut Mist
- G10 Nutmeg Mist
- G12 Pecan Mist
- G13 Cappuccino Mist
- G14 Almond Mist
- G19 Praline Mist
- G20 Wheat Mist
- G30 Paprika Mist
- G38 Sugared Walnut
- G56 Sugared Silver
- G60 Burnished Snow
- G101 Platinum Mist
- G101#10 Platinum Mist Rooted
- G60#2 Burnished Snow Rooted

### 2 NEW COLOURS!

- Onyx Glow (44/38/56)
- Pewter Glow (#61/41)



Platinum Mist  
Rooted



Sugared  
Silver

## Kim (CODE: KI & KIP)

A beautiful cropped style wig with short layers and a subtle fringe makes Kim the ultimate in fuss-free styling.

LENGTH FROM CROWN	LENGTH FROM NAPE	LENGTH FROM SIDE OF HEAD
2 3/4" - 4"	2 1/4"	2 3/4"

**CAP TYPE:** Comfort Cap

**CAP SIZES:** Average & Mini Petite

### COLOURS:

- Brazil Nut (8)
- Wheat (23/20)
- Buttered Toast (10/26)
- Pecan (12)
- Honey (12/28)
- Ash Brown (14)
- Honey Blonde (16)
- Frosted Pearl (17/101)
- Sahara (1822)
- Chardonnay (22)
- Copper\* (27)
- Mink (38)
- Silver Mink (48)
- Pewter (51)
- Platinum Grey (56)
- Shaded Blonde (JS124)
- Golden Lights (613/14)

2  
sizes

\*available in  
mini petite only.

Golden  
Lights



## Kim Deluxe (CODE: KID)

Kim has long been a best seller, now she has a deluxe update, with a lace front for off the face styleability & a monofilament part for a very natural parting.

LENGTH FROM CROWN	LENGTH FROM NAPE	LENGTH FROM SIDE OF HEAD
2" - 3 1/2"	1 3/4"	2 3/4"

**CAP TYPE:** Monofilament Part & Lace Front with Comfort Cap

**CAP SIZES:** Petite

### COLOURS:

- Chocolate Copper (6/30)
- Brazil Nut (8)
- Wheat (23/20)
- Pecan (12)
- Honey (12/28)
- Honey Blonde (16)
- Frosted Pearl (17/101)
- Sahara (18/22)
- Mink (38)
- Platinum Grey (56)
- Shaded Blonde (JS124)
- Pearl Platinum (101)

L

M



Wheat



Sugared Walnut

## Simplify (CODE: SIMP02)

Another style inspired by a British icon, this short, sweet style evokes Julie Andrews crop. The lace front ensures this wig is natural & easy to wear.

LENGTH FROM CROWN	LENGTH FROM NAPE	LENGTH FROM SIDE OF HEAD
3"	1 3/4"	2 1/2"

**CAP TYPE:** Lace Front with Monofilament Crown and Comfort Cap

**CAP SIZES:** Petite

### COLOURS:

- G4 Dark Chocolate Mist
- G6 Coffee Mist
- G630 Chocolate Copper
- G8 Chestnut Mist
- G10 Nutmeg Mist
- G12 Pecan Mist
- G13 Cappuccino Mist
- G14 Almond Mist
- G19 Praline Mist
- G20 Wheat Mist
- G30 Paprika Mist
- G38 Sugared Walnut
- G56 Sugared Silver
- G60 Burnished Snow
- G101 Platinum Mist

L

M

### 2 NEW COLOURS!

- Onyx Glow (44/38/56)
- Pewter Glow (#61/41)



Wheat Mist



## Katyana (CODE: KTNA)

A sweet pixie that works spiked up or smoothed down. The fringe is slightly assymetric for a very modern look.

LENGTH FROM CROWN	LENGTH FROM NAPE	LENGTH FROM SIDE OF HEAD
3" (7.5cm)	1 1/4" (3cm)	2" (5cm)

**CAP TYPE:** Comfort Cap

**CAP SIZES:** Petite

### COLOURS:

- Dark Choc Mist (G4)
- Cappuccino Mist (G13)
- Buttered Toast Mist (G15)
- Honey Mist (G16)
- Praline Mist (G19)
- Wheat Mist (G20)
- Ginger Mist (G27)
- Paprika Mist (G30)
- Sugared Silver (G56)
- Burnished Snow (G60)
- Platinum Mist (G101)
- Chocolate Copper Mist (G630)
- Soft Silvery Moon (SF51/60)

Sugared Silver



Praline Mist

## Vision (CODE: VISI02)

An easy to wear crop, with a little extra volume on top & a fringe that is designed to flatter & bring out your eyes. The lace front creates a natural looking hairline.

LENGTH FROM CROWN	LENGTH FROM NAPE	LENGTH FROM SIDE OF HEAD
4 3/4"	2"	3"

**CAP TYPE:** Lace Front with Monofilament Crown and Comfort Cap

**CAP SIZES:** Petite

### COLOURS:

- G4 Dark Chocolate Mist
- G6 Coffee Mist
- G630 Chocolate Copper Mist
- G8 Chestnut Mist
- G10 Nutmeg Mist
- G12 Pecan Mist
- G13 Cappuccino Mist
- G14 Almond Mist
- G19 Praline Mist
- G20 Wheat Mist
- G56 Sugared Silver
- G101 Platinum Mist
- G135 Chianti Mist

L

M

Chestnut Mist




Sugared Silver



# Classic

Some looks never go out of fashion. All our classic wigs are true favourite styles that have passed the test of time.



## Gemini (CODE: ZGE)

Beautiful soft curls which drape down the neck, plenty of natural movement and a light, wispy fringe defines Gemini – a stunning wig which is one of the most popular pieces in our classic collection.

LENGTH FROM CROWN	LENGTH FROM NAPE	LENGTH FROM SIDE OF HEAD
3 1/4" – 4"	6"	4 1/2"

**CAP TYPE:** Comfort Cap **CAP SIZES:** Average

**COLOURS:**

- Dark Chocolate (6)
- Brazil Nut (8)
- Pecan (12)
- Ash Brown (14)
- Shaded Wheat (1424)
- Barleycorn (1426)
- Honey Blonde (16)
- Frosted Pearl (17/101)
- Sahara (1822)
- Chardonnay (22)
- Copper (27)
- Mahogany (30)
- Mink (38)
- Pearl (101)

Shaded Wheat



## Jane (CODE: ZJA)

Voluminous, lightly waved, bouncy layers characterise Jane – a comfortable, lightweight wig which is perfect for anyone seeking both comfort and style.

LENGTH FROM CROWN	LENGTH FROM NAPE	LENGTH FROM SIDE OF HEAD
3"	2 1/2"	3"

**CAP TYPE:** Comfort Cap **CAP SIZES:** Petite

**COLOURS:**

- Brazil Nut (8)
- Pecan (12)
- Ash Brown (14)
- Honey Blonde (16)
- Frosted Pearl (17/101)
- Sahara (1822)
- Mink (38)
- Silver Mink (48)
- Sandy Pearl (49)
- Pewter (51)
- Platinum Grey (56)
- Snow White (60)
- Pearl (101)



Sahara




## Short Cut (CODE: ZN27)

A classy, close to the head style featuring lots of short, choppy layers and a face-framing fringe makes Short Cut the perfect wig for both day and night.

LENGTH FROM CROWN	LENGTH FROM NAPE	LENGTH FROM SIDE OF HEAD
2 1/4" - 2 3/4"	1 3/4"	2 3/4"

**CAP TYPE:** Comfort Cap **CAP SIZES:** Average

### COLOURS:

- Midnight (1B)
- Dark Chocolate (JR6)
- Brazil Nut (JR8)
- Walnut (JR10)
- Pecan (JR12)
- Ash Brown (JR14)
- Golden Walnut (1416)
- Butterscotch (1627)
- Sahara (1822)
- Swedish Blonde (JR21)
- Wheat (JR24L)
- Copper (JR27)
- Mahogany (JR30)
- Onyx Grey (JR36)
- Mink (JR38)
- Silver Mink (JR48)
- Pewter (JR51)
- Platinum Grey (JR56)
- Snow White (JR60)
- Platinum (100)
- Pearl (JR101C)
- Shaded Blonde (JS124)
- Honey Red (JR502+)
- Ebony (2)



Wheat

## Nice 'n' Neat (CODE: ZNN)

This wig creates a tidy but full silhouette and features lots of textured layers and a wispy fringe. Perfect for anyone seeking an easy-to-wear, fuss-free style.

LENGTH FROM CROWN	LENGTH FROM NAPE	LENGTH FROM SIDE OF HEAD
2" - 3"	2"	2 1/2"

**CAP TYPE:** Comfort Cap **CAP SIZES:** Petite

### COLOURS:

- Brazil Nut (8)
- Pecan (12)
- Ash Brown (14)
- Honey Blonde (16)
- Frosted Pearl (17/101)
- Sahara (1822)
- Onyx Grey (36)
- Mink (38)
- Silver Mink (48)
- Sandy Pearl (49)
- Pewter (51)
- Platinum Grey (56)
- Snow White (60)
- Pearl (101)



Snow White

Honey Blonde

## Short & Sweet (CODE: ZSAS)

A classic, close-to-the-head wig featuring all-over layers and a wispy fringe makes Short and Sweet the perfect choice for anyone seeking an easy-care, easy-to-wear style.

LENGTH FROM CROWN	LENGTH FROM NAPE	LENGTH FROM SIDE OF HEAD
2" - 3"	1 3/4"	2 1/2"

**CAP TYPE:** Comfort Cap **CAP SIZES:** Petite

### COLOURS:

- Ebony (2)
- Pecan (12)
- Ash Brown (14)
- Barleycorn (1426RC)
- Honey Blonde (16)
- Sahara (1822)
- Strawberry Blonde (29)
- Mink (38)
- Silver Mink (48)
- Platinum Grey (56)
- Snow White (60)
- Platinum (100)
- Pearl (101)



Brazil Nut

Mink



## Just Right (CODE: ZN13)

A classic style wig featuring stunning waves and a softly curved fringe defines Just Right – a timeless piece which creates an elegant silhouette.

**LENGTH FROM CROWN**

2 3/4" – 3 3/4"

**LENGTH FROM NAPE**

2 3/4"

**LENGTH FROM SIDE OF HEAD**

3 1/4"

**CAP TYPE:** Comfort Cap

**CAP SIZES:** Average

### COLOURS:

- Brazil Nut (JR8)
- Walnut (JR10)
- Pecan (JR12)
- Ash Brown (JR14)
- Frosted Pearl (17/101)
- Sahara (1822)
- Wheat (JR24L)
- Mink (JR38)
- Silver Mink (JR48)
- Pewter (JR51)
- Platinum Grey (JR56)
- Snow White (JR60)
- Pearl (JR101C)
- Honey Red (JR502+)
- Buttered Toast (JR504+)



## Vernice (CODE: VER)

Incredibly voluminous, choppy layers and a feather-light fringe make Vernice a simple but stunning wig style which is as comfortable as it is stylish.

**LENGTH FROM CROWN**

2" – 4"

**LENGTH FROM NAPE**

2 3/4"

**LENGTH FROM SIDE OF HEAD**

2 3/4"

**CAP TYPE:** Comfort Cap **CAP SIZES:** Average

### COLOURS:

- Midnight Brown (R4)
- Chocolate Copper (R6/30)
- Glazed Hazelnut (R829S)
- Ginger Brown (R830)
- Chestnut (R10)
- Glazed Mocha (R11S)
- Buttered Toast (R1416T)
- Honey Ginger (R14/25)
- Golden Wheat (R14/88)
- Glazed Sand (R1621S)
- Glazed Strawberry (R29S)
- Silver Mist (R56/60)



# Janet (CODE: JT)

A soft, feminine wig, featuring all-over, textured layers and a light fringe – Janet is comfortable to wear and incredibly easy to style.

LENGTH FROM CROWN	LENGTH FROM NAPE	LENGTH FROM SIDE OF HEAD
3"	2 1/2"	3"

**CAP TYPE:** Comfort Cap **CAP SIZES:** Average

**COLOURS:**

- Brazil Nut (8)
- Pecan (12)
- Ash Brown (14)
- Honey Blonde (16)
- Frosted Pearl (17/101)
- Sahara (1822)
- Mink (38)
- Silver Mink (48)
- Platinum Grey (56)
- Snow White (60)
- Pearl (101B)



Sahara

# Christina (CODE: ZCR)

Cascades of voluminous ringlet curls and a soft, bouncy fringe defines Christina. A truly stunning style which is as elegant as it is timeless.

LENGTH FROM CROWN	LENGTH FROM NAPE	LENGTH FROM SIDE OF HEAD
4"	4"	3 1/2"

**CAP TYPE:** Comfort Cap **CAP SIZES:** Average

**COLOURS:**

- Ebony (2)
- Dark Chocolate (6)
- Brazil Nut (8)
- Pecan (12)
- Ash Brown (14)
- Barleycorn (1426)
- Honey Blonde (16)
- Sahara (1822)
- Chardonnay (22)
- Mahogany (30)
- Onyx Grey (36)
- Mink (38)



Pecan

## Sultry (CODE: ZN03)

A mid length, stunning wig featuring cascades of soft curls which tumble down to the shoulders and a barely-there fringe make Sultry the most perfect choice for anyone seeking effortless style and comfort.

LENGTH FROM CROWN	LENGTH FROM NAPE	LENGTH FROM SIDE OF HEAD
4" – 5 1/4"	6"	8"

**CAP TYPE:** Comfort Cap **CAP SIZES:** Average

### COLOURS:

- Ebony (2)
- Dark Chocolate (JR6)
- Brazil Nut (JR8)
- Pecan (JR12)
- Ash Brown (JR14)
- Golden Walnut (1416)
- Barleycorn (1426)
- Sahara (1822)
- Swedish Blonde (JR21)
- Wheat (JR24L)
- Copper (JR27)
- Bordeaux(JR33)
- Flame (JR130)
- Honey Red (JR502+)



Wheat

## Something Special (CODE: ZN29)

A short cut style featuring lots of expertly cut layers and volume at the crown make this wig Something Special! Comfortable to wear and easy to style – simply rake through with the fingers to accentuate the layers or comb for a sleeker look.

LENGTH FROM CROWN	LENGTH FROM NAPE	LENGTH FROM SIDE OF HEAD
2 3/4 – 3 3/4"	2 3/4"	3 1/4"

**CAP TYPE:** Comfort Cap **CAP SIZES:** Average

### COLOURS:

- Brazil Nut (JR8)
- Walnut (JR10)
- Pecan (JR12)
- Ash Brown (JR14)
- Shaded Wheat (1424)
- Barleycorn (1426RC)
- Sahara (1822)
- Swedish Blonde (JR21)
- Wheat (JR24L)
- Mink (38)
- Silver Mink (48)
- Platinum Grey (JR56)
- Platinum (100)
- Shaded Blonde (JS124)
- Honey Red (JR502+)
- Henna Red (32HR)



Honey Red

## Milady (CODE: ZMIL)

A timeless piece with lots of curls and wonderful volume – Milady is a staple wig which can be worn all-day, everyday or for more formal occasions.

LENGTH FROM CROWN	LENGTH FROM NAPE	LENGTH FROM SIDE OF HEAD
4"	3 1/4"	4"

**CAP TYPE:** Comfort Cap **CAP SIZES:** Average

### COLOURS:

- Ebony (2)
- Brazil Nut (8)
- Pecan (12)
- Ash Brown (14)
- Honey Blonde (16)
- Frosted Pearl (17/101)
- Sahara (1822)
- Chardonnay (22)
- Copper (27)
- Onyx Grey (36)
- Mink (38)
- Silver Mink (48)
- Platinum Grey (56)
- Pearl (101)



Sahara

## Virgo (CODE: ZVI)

A beautifully soft and sweet style, the Virgo wig features lots of textured layers and a voluminous crown – creating a striking and elegant silhouette.

LENGTH FROM CROWN	LENGTH FROM NAPE	LENGTH FROM SIDE OF HEAD
3 1/2" – 3 3/4"	2 1/2"	3"

**CAP TYPE:** Comfort Cap **CAP SIZES:** Average

### COLOURS:

- Brazil Nut (8)
- Pecan (12)
- Ash Brown (14)
- Honey Blonde (16)
- Frosted Pearl (17/101)
- Sahara (1822)
- Chardonnay (22)
- Mink (38)
- Silver Mink (48)
- Platinum Grey (56)
- Snow White (60)



Platinum Grey

## Breeze (CODE: ZBR)

Softly waved, textured layers and a lightly cut fringe defines Breeze – a classic cut which features lots of natural volume and bounce.

LENGTH FROM CROWN	LENGTH FROM NAPE	LENGTH FROM SIDE OF HEAD
2"	4"	4"

**CAP TYPE:** Comfort Cap **CAP SIZES:** Average

### COLOURS:

- Ebony (2)
- Brazil Nut (8)
- Caramel (12/16)
- Sahara (1822)
- Chestnut/Bordeaux (31/33)
- Soft Mink (48/38)
- Platinum Grey/Pewter (56/51)
- Shaded Blonde (JS124)



## Ruby (CODE: RU)

A classic short style which comes ready-to-wear, Ruby features a side-swept fringe that can be worn brushed forwards to eyebrow level or swept to the side. This, combined with all-over choppy layers, make it a firm favourite for anyone seeking a comfortable, lightweight style.

LENGTH FROM CROWN	LENGTH FROM NAPE	LENGTH FROM SIDE OF HEAD
2 1/2 – 3 1/2"	2"	2 1/2"

**CAP TYPE:** Comfort Cap **CAP SIZES:** Average and Petite

### COLOURS:

- Ebony (2)\*
- Dark Walnut (SF1B/8)\*
- Soft Mahogany (SF6/130)\*
- Soft Buttered Toast (SF10/26)\*
- Soft Honey (SF12/28)
- Soft Glazed Honey (SF13/16)
- Golden Wheat (1488)
- Soft Wheat (SF23/20)
- Soft Silvery Moon (SF51/60)
- Golden Lights (SF613/14)

\* Average only

2  
sizes



## Enhance (CODE: EHCE)

Enhance is an easy sweet cropped straight style, ready to wear right out of the box!

LENGTH FROM CROWN	LENGTH FROM NAPE	LENGTH FROM SIDE OF HEAD
3"	1 3/4"	2"

**CAP TYPE:** Comfort Cap **CAP SIZES:** Average

### COLOURS:

- Chocolate Copper Mist (G630+)
- Nutmeg Mist (G10+)
- Pecan Mist (G12)
- Cappuccino Mist (G13+)
- Praline Mist (G19+)
- Wheat Mist (G20+)
- Sugared Walnut (G38+)
- Sugared Almond (G56+)
- Burnished Snow (G60+)
- Platinum Mist (G101+)
- Chianti Mist (G135+)



Wheat Mist

Platinum Mist



## Definitely (CODE: WDEF)

Definitely features a nape-hugging neck and a beautifully arranged circle of curls at the crown. Easy to style and incredibly comfortable for all day wear, this is a style which ticks all the boxes.

LENGTH FROM CROWN	LENGTH FROM NAPE	LENGTH FROM SIDE OF HEAD
2 3/4" - 3 1/4"	1 3/4"	2 3/4"

**CAP TYPE:** Comfort Cap **CAP SIZES:** Average

### COLOURS:

- Brazil Nut (8)
- Soft Mocha (11)
- Caramel (12/16)
- Ash Brown(JR14C)
- Honey Blonde (16)
- Sahara (1822)
- Chardonnay (22)
- Mink (38)
- Platinum Grey (56)
- Snow White (60)
- Platinum White (56/60)
- Pearl (101)



Sahara

# Top Pieces

## & HAIR ADDITIONS

Clever Hair additions to give coverage or volume just where you need it

### Layered Short Top Piece

(CODE: LAYE09)

The perfect little piece to add a bit of volume to fine hair, disguise roots, or even use as a clip in fringe.

**LENGTH FROM CROWN** 9" **LENGTH FROM SIDE OF HEAD** 9"

**CAP TYPE:** Monofilament Top with 4 secure clips (2.5" wide, 5" front to back)

#### COLOURS:

- R1 Black,
- R2 Ebony
- R4 Midnight Brown
- R6 Dark Choc
- R6/30 Choc/Copper
- R8/30 Ginger Brown
- R10 Chestnut
- R21 Sandy Blonde
- R29S Glazed Strawberry
- R56/60 Silver Mist
- R101 Pearl Platinum
- R1416 Buttered Toast
- R1488 Golden Wheat
- R1627 Butterscotch

Choc/  
Copper



### Mid Length Lace Front Topper

(CODE: MLFT)

The easy way to disguise fine or thinning hair, with a natural looking lace front.

**LENGTH FROM CROWN** 30cm/12" **LENGTH FROM SIDE OF HEAD** 30cm/12"

**CAP TYPE:** Monofilament full top of head with lace front. 4 Secure clips. 16cm front to back, 17 cm wide.

#### COLOURS:

- R4 Midnight Brown
- R6 Dark Chocolate
- R6/30 Chocolate Copper
- R10 Chestnut
- R1416 Buttered Toast
- R1488 Golden Wheat
- R21 Sandy Blonde

Golden  
Wheat



# Hothair Fibre<sup>PLUS</sup>

## NEW STYLES NEW FIBRE!

We're pleased to announce that all new Hothair styles are now created with Fibre+

With less shine & more of a 'realistic' handle than our standard fibre, Fibre+ is a fantastic fibre that looks & feels just like real hair!

Best of all is it can be gently heat styled (up to 180c), allowing you to curl or straighten it as desired. The colours available in Fibre+ are as close as we could make them to the original fibre colours. Some colours have a slight variation, however they still blend beautifully!

### The Creative Weft

(CODE: TCWF)

An easy single weft extension to add volume or length

**COLOURS:**

- All Fibre+ colours except Espresso+ & Silver Mist+



### Super Boost

(CODE: SBST)

A clever piece to clip over your crown to add volume

Simply section the hair and clip, then flip your own hair over

the top to blend

**COLOURS:**

- All Fibre+ colours except Espresso+, Ginger Brown+ & Silver Mist



### Sleek Mini Piece

(CODE: SMP)

A lovely and sleek mini ponytail to clip on for added Oomph!

**COLOURS:**

- All Fibre+ colours



### Super Grande Pony

(CODE: GNDP)

Super Long & Super Swishy. Inspired by a famous pop star!

**COLOURS:**

- All Fibre+ colours except Angel White, Silver Mist & Ginger Brown



## Mini Clip Bun

(CODE: MCPB)

A sweet little bun that simply clips over your own hair for an instantly glam updo.

**COLOURS:**

- All Fibre+ colours



## Bouncy Wrap

(CODE: BNCW)

A perfect scrunchy wrap with lots of bouncy waves and curls!

**COLOURS:**

- All Fibre+ colours



## Messy Top Knot

(CODE: MTK)

Clip this pretty chignon over your own bun for an easy updo.

**COLOURS:**

- Available in all Fibre+ colours



## Tousled Wrap

(CODE: TSLW)

A perfect scrunchy wrap for adding oomph and volume to your bun!

**COLOURS:**

- All Fibre+ colours



## The Undone Chignon

(CODE: TUCH)

An easy to clip in piece for a pretty undone bun.

**COLOURS:**

- All Hothair Synthetic Colours



## Delicate Clip In

(CODE: DELI07)

A sweet ponytail on a small claw clip. Especially designed for fine hair.

**COLOURS:**

- All Hothair Synthetic Colours



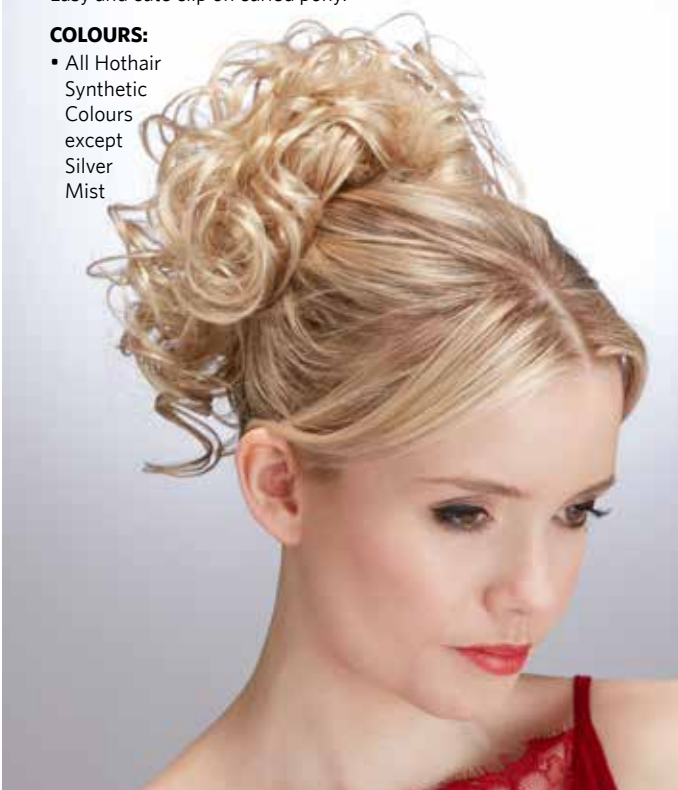
## Curled Clip In Pony

(CODE: CURL07)

Easy and cute clip on curled pony.

**COLOURS:**

- All Hothair Synthetic Colours except Silver Mist



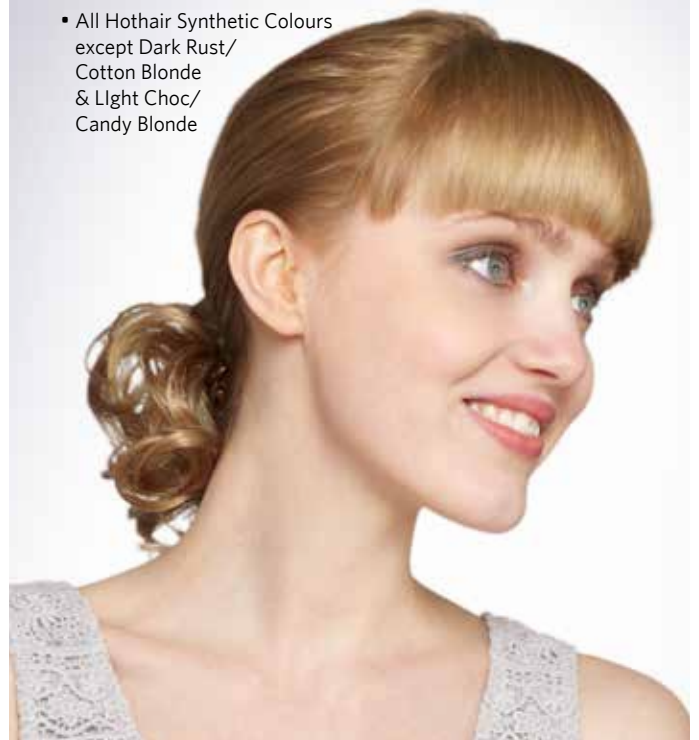
## Dainty Clip

(CODE: DC)

A sweet little clip with soft curls. Perfect for fine hair.

**COLOURS:**

- All Hothair Synthetic Colours except Dark Rust/ Cotton Blonde & Light Choc/ Candy Blonde



## Updo Creator

(CODE: UPDO01)

An innovative clip in with soft curls on wires that help you create chic updos.

### COLOURS:

- All Hothair Synthetic Colours



## Big Waves Wrap

(CODE: BIG02)

Large Curls and waves on a sturdy elastic. Use to make chic updos and buns.

### COLOURS:

- All Hothair Synthetic Colours



## Charming Wrap

(CODE: CHW)

Different lengths of hair on a sturdy elastic. Create chic undone updo looks.

### COLOURS:

- All Hothair Synthetic Colours



## Curly Palm Clip

(CODE: CP)

Lots of curls on palm clip. Easy to use for all kinds of events.

### COLOURS:

- All Hothair Synthetic Colours except Silver Mist & Pearl Platinum



## Hothair Synthetic & Fibre+ Colour Options\*

\*colours with a + available in synthetic or new Fibre+ Colours  
NEW Angel White & Ice Blonde  
Only available in Fibre+ Colours

### NEW SHADE



Angel White+



Auburn Twist



Butterscotch+



Cappuccino+



Chocolate Copper+



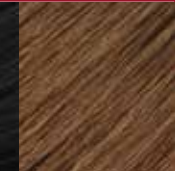
Creamy Twist+



Dark Rust/  
Cotton  
Blonde+

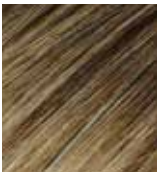


Espresso+



Ginger Brown+

### NEW SHADE



Harvest Gold+



Ice Blonde+



Light Choc/  
Candy  
Blonde+



Pearl  
Platinum+



Sable Twist



Silver Mist+



Strawberry  
Twist+



Swedish  
Blonde+



Warm Brown+

# Childrens

## WIGS

Our Mini Petite size wigs are perfect for little heads

### Dream

(CODE: DM)

Shown in Praline Mist (G19+)

See page 24 for details and colours

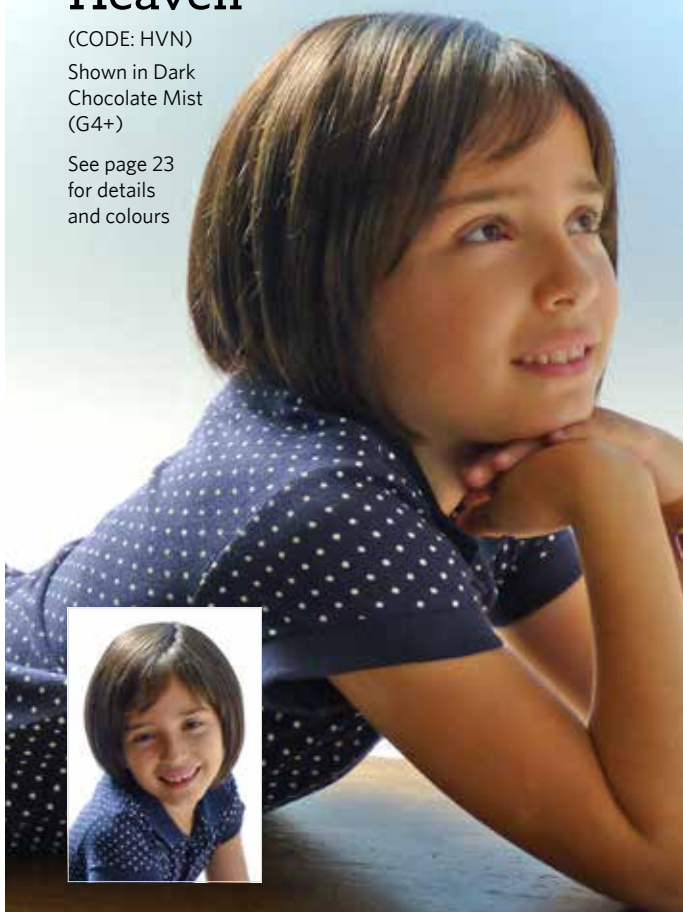


### Heaven

(CODE: HVN)

Shown in Dark Chocolate Mist (G4+)

See page 23 for details and colours



### Infinity

(CODE: INF)

Shown in Chestnut Mist

See page 4 for details and colours



Pecan Mist



## Terry Turban (CODE: TER)

Cotton Terry is cool in summer yet soft & cozy on sensitive scalps. These turbans can easily be worn poolside or post shower, or just around the house, yet are chic enough for unexpected guests.

### COLOURS:

- White
- Black
- Lilac
- Pink
- Navy
- Sandstone
- Cream



## Pleated Turban (CODE: PLEAT)

A stretchy turban with chic pleats.

### COLOURS:

- Black
- Cobalt
- Ivory
- Navy
- White



## Velveteen Turban (CODE: VEL)

These stretchy luxurious turbans are so glamorous, yet so comfortable. Perfect for an evening occasion, or for when you want to look extra special.

### COLOURS:

- Navy
- Bottle Green
- Claret
- Black



## Bamboo Pleated Turban (CODE: BPLEAT)

new

A super soft pleated turban made with skin friendly bamboo. Lightweight and breathable. Perfect for sensitive skin.

### COLOURS:

- Black
- Caramel
- Cobalt Blue
- Deep Red
- Ivory
- Navy
- Pink
- Pistachio



Our range of wig care products are specially designed to help you care for wigs and hairpieces.



## Synovation

The Synovation range of products has been especially created by us to cleanse, nurture and protect synthetic wigs and hairpieces. Water soluble, gentle and with a fresh cucumber & mint fragrance.

### Shampoo 250ml (SYN/S)

Gently cleanses, removes residue and odours and brightens colour.

### Revitaliser 250ml (SYN/R)

Use after shampooing to soften, condition & extend the life span of your piece.

### Fibre Oil 250ml (SYN/FO)

Gives a glossy finish and eliminates & prevents tangles & frizzing - especially on long hair.

### Conditioning Spray 250ml (SYN/C)

Assists styling, coats fibres to reduce friction frizz, plus gives healthy looking shine and body.

### Finishing Spray 250ml (SYN/FS)

A very light hairspray to hold styles without stiffness, brushes out easily.

**NEW!** ALL SYNOVATION  
PRODUCTS AVAILABLE  
IN 100ml BOTTLES!

- 1 Black Wig Brushes (PB)
- 2 Wooden Wig Brushes (BRU)
- 3 Polystyrene Heads (PH)
- 4 Toupee Tape - 5m x 25mm (STT)
- 5 Toupee Tape - 23m x 24mm (LTT)
- 6 Wig Stands (WFR2)
- 7 Deluxe Comfy Grip (DCSG)



### Deluxe Comfy Grip (DELU01)

Hypoallergenic reusable silicone headband that designed to fit under your wig to cushion & provide non-slip support. Deluxe has little 'nubbles' for grip, Comfy grip is smooth both sides.



### Headline It (HLI)

Thin, disposable, tan coloured liner that fixes securely inside any wig or cap to create a protective, discrete and breathable barrier. Box of 10.



### Mesh Cap (MWL)

These handy mesh liners are designed to keep your hair tucked up neatly and also help prevent wig slippage.

Available in Black, Blonde, Brown and Grey.



### Mannequin Display Heads

Available in front or side facing in black or polystyrene



### Original Hair Retainer (WC)

Available in Black, Blonde, Brown and Grey.

All Natural Image wigs are created to be comfortable, chic and ready to wear. We have an array of cap types made with you in mind, all based on our Comfort Cap technology to ensure all day comfort and ease. Our range incorporates exclusive monofilament, hand tied and lace front styles which exemplify the latest in wig technology creating the most realistic and natural looking styles imaginable.

Easily find our wigs with luxury details by looking for their symbols throughout the catalogue.

L

Lace Front

M

Monofilament

H

Hand Tied



## Comfort Caps

Our Comfort Cap is the modern standard in caps. Lightweight stretch wefts makes this cap light, comfortable and breathable, to ensure all day comfort while the fine Velcro tapes mean that the wig can be adjusted for a custom like fit. The adjustable ear tabs are crafted out of flexible copper and can be tightened to create a comfortable and secure fit, particularly ideal for spectacle wearers.



## Monofilament Part or Crown with Comfort Cap Base

The monofilament parting or crown of this cap is hand knotted onto a skin matching base to provide the most natural looking movement and parting. The base features all the benefits of our light, breathable Comfort Cap.



## Monofilament Top with Comfort Cap Base

The monofilament top of this cap is hand knotted on a skin matching base to provide the most natural looking movement and parting. Depending on the style, some monofilament caps will also have a polyurethane strip at the front to provide a place to attach wig tape for added security. The base features all the benefits of our light, breathable Comfort Cap.



## 100% Hand Knotted Base

This cap is 100% hand knotted onto a fine mesh. This makes it lightweight, breathable and gives realistic movement. The soft velvet covered front & ears make this a comfortable cap to wear all day.



## Lace Front with Comfort Cap Base and Monofilament Top, crown or parting.

The monofilament crown or parting of this cap is hand knotted on a skin matching base to provide the most natural looking movement and parting, and also has the added benefit of a sheer, virtually

invisible, hand knotted sheer lace front for off the face styling. The base is our Comfort Cap construction which is light, comfortable and breathable while the fine Velcro tapes mean that the wig can be adjusted for a custom like fit.



## Lace Front with Comfort Cap Base

A lace front wig has a hairline that is hand knotted to a very fine, almost invisible mesh that blends with your own skin, for a natural looking hair line. This is combined with the features of our Comfort Cap for a comfortable easy fit.



## Monofilament Top with Hand Knotted Base and Lace Front

3 fabulous features all on one wig cap!

**1:** The monofilament top is hand knotted on a skin matching base for natural looking movement & parting

**2:** The lace front is hand knotted to a very fine, almost invisible mesh that blends with your own skin, for a natural looking hair line

**3:** The rest of the wig is hand knotted onto a fine, breathable mesh that is contoured to fit the head. This creates a lightweight, barely there cap that has incredible natural movement.

Fine velcro tabs for adjustability and soft velvet covered ear tabs for comfort complete the features on this type of cap.

NATURAL  
image

## Wig Size Chart

WIG SIZE	AROUND THE HEAD (INCHES)	FRONT TO BACK (INCHES)	EAR TO EAR (INCHES)
MINI PETITE (MP)	20 ½	13	12 ¾
PETITE (P)	21	13 ¾	13
AVERAGE (A)	21 ½	14 ¼	13 ½

• N A T U R A L  
image

COLLECTION  
2020/  
2021



DISTRIBUTED BY

