

GABOR<sup>®</sup>  
*essentials*<sup>™</sup>  
WIG COLLECTION

NEW FOR 2019

GABOR<sup>®</sup>  
*essentials*<sup>™</sup>  
WIG COLLECTION

19ESSENBRO / GB82401



HAIRUWEAR.COM/GABOR  
888-655-8900

**HAIRUWEAR<sup>®</sup>**  
CHANGES **EVERYTHING**  
©2019 HairUWear Inc.



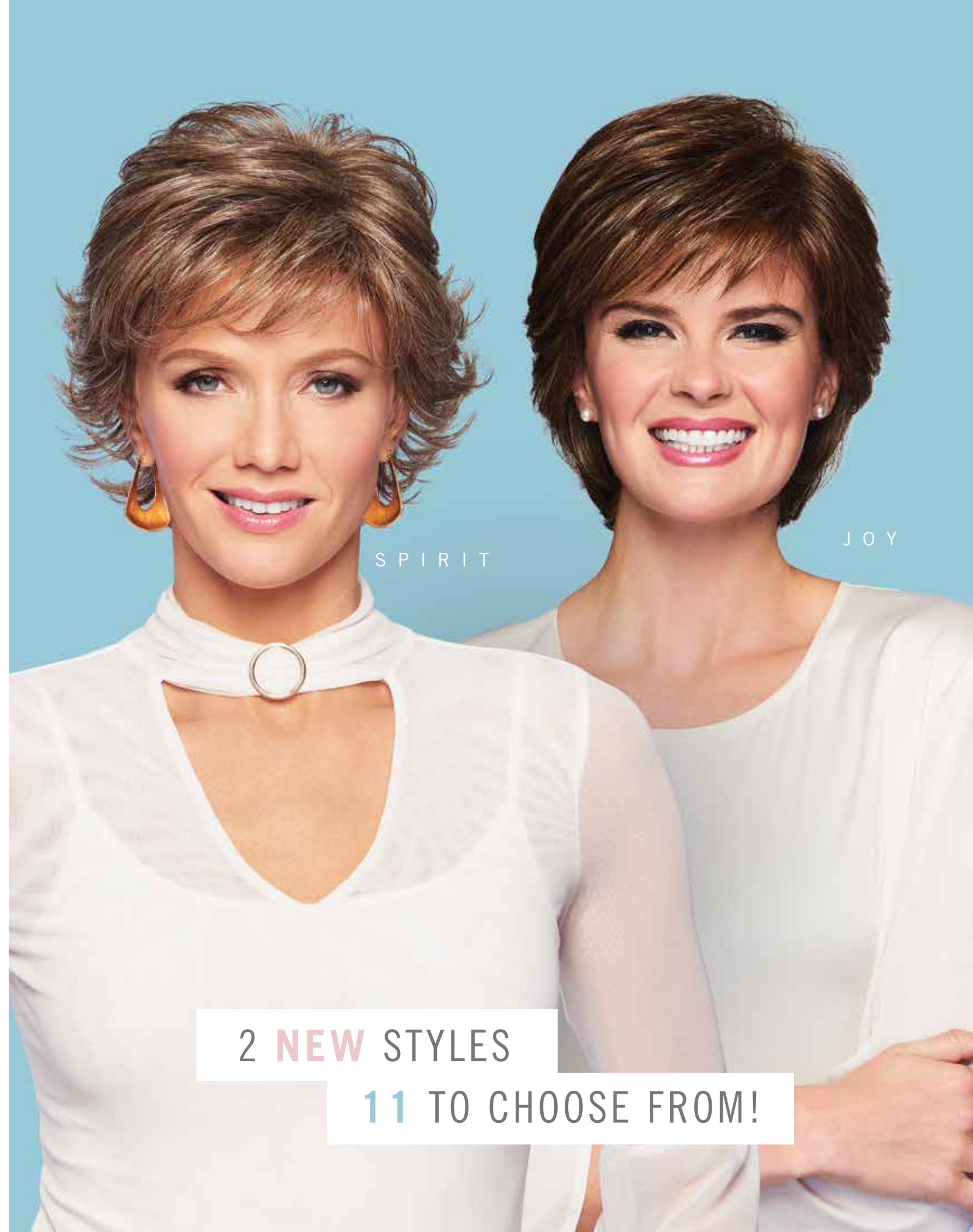


GABOR ESSENTIALS | WIG COLLECTION

MODERN STYLING  
MODERATELY PRICED

Choose a fresh new look. Try a bold new color.  
The Gabor Essentials Collection makes starting  
or building a hair wardrobe so easy – and so  
affordable! From sleek and sweet, to dramatic  
and downright stunning, each style features our  
cool, lightweight Comfort Cap™ and the versatility  
of heat-styleable Excelle™ synthetic fiber.

Cover model is wearing NEW Joy in Medium Brown.



2 NEW STYLES

11 TO CHOOSE FROM!

J O Y

With loose layers and tapered ends, 'Joy' is the quintessential cropped shag. Features include a sculpted nape, an eyelash bang and stylish sides to frame the face. A firm shake and a bit of finger styling is all that's needed to have this looking great.

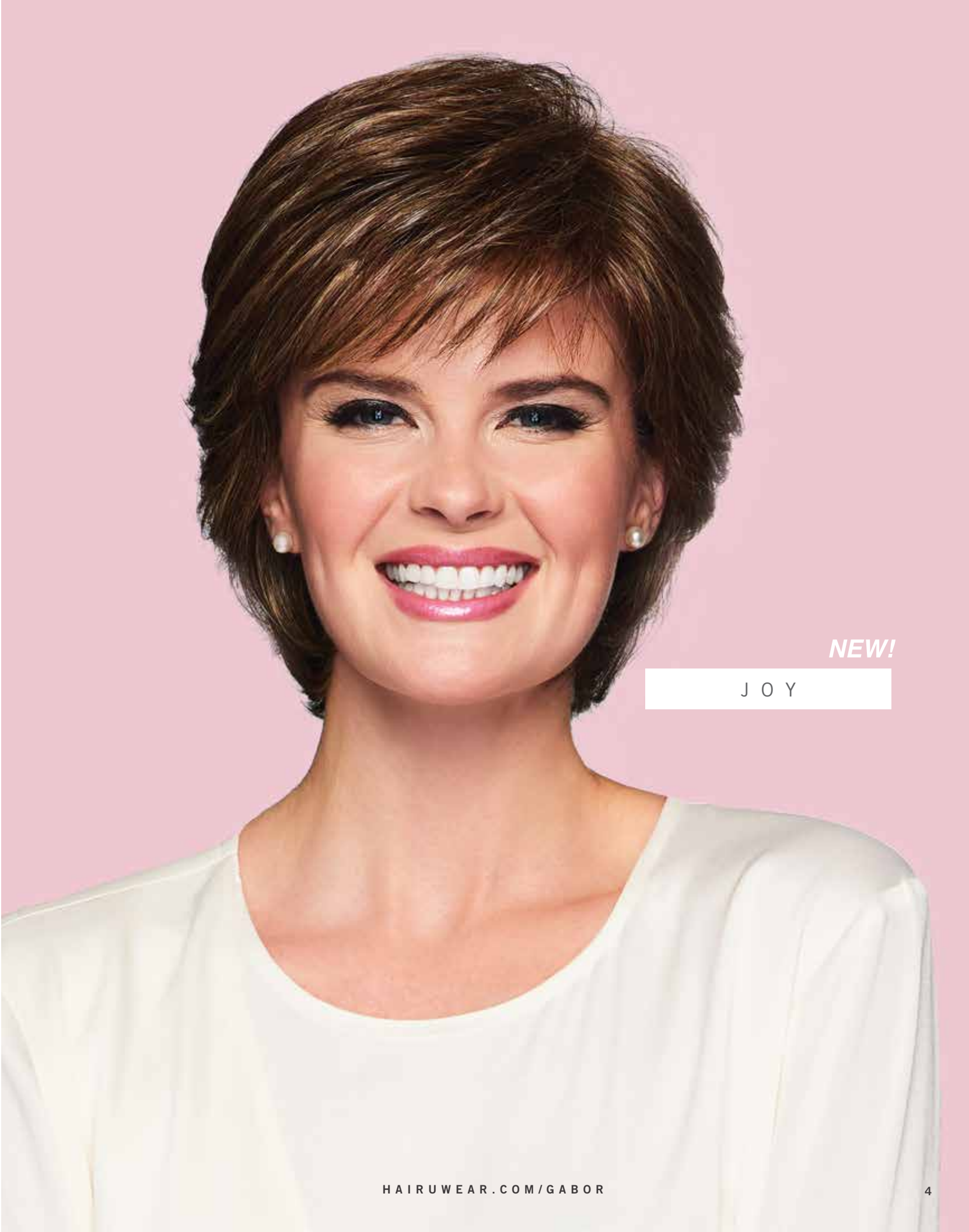
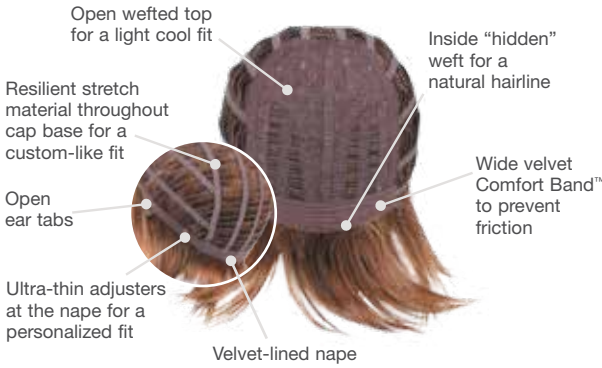


Front 4 ¼" | Crown 4 ¼" | Sides 4 ¼" | Back 4 ¼" | Nape 3 ½" | Weight – 2.8 oz.  
Cap Size: Average

**Available colors:** Black, Dark Brown, Medium Brown, Light Brown, Brown/Blonde, Dark Blonde, Medium Blonde, Light Blonde, Light Red, Medium Red, Brown Grey, Light Grey (Shown in Medium Brown)

*Suitable for Oval, Diamond, Heart, Pear & Oblong face shapes.*

C O M F O R T   C A P   ™



**NEW!**

J O Y



S P I R I T

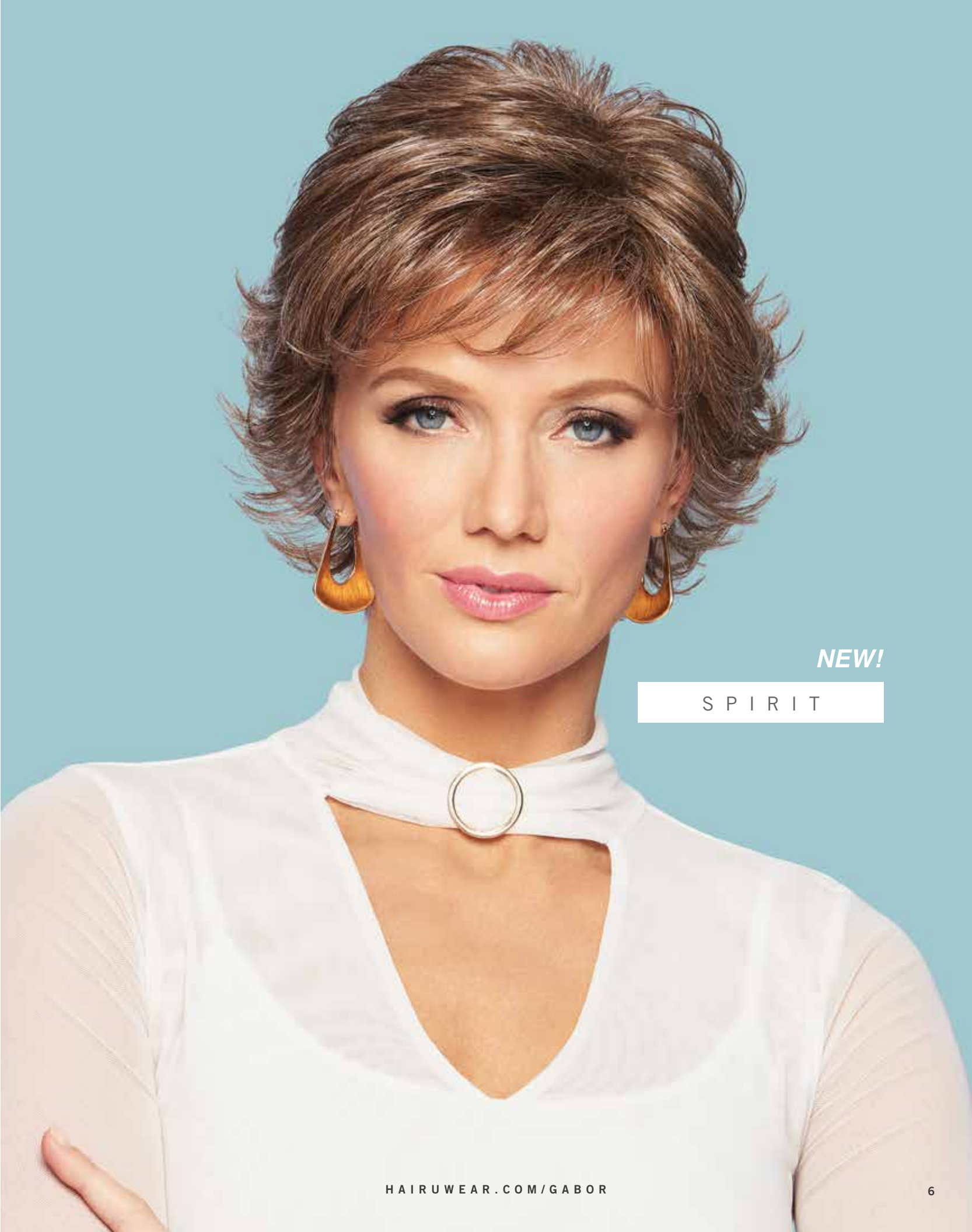
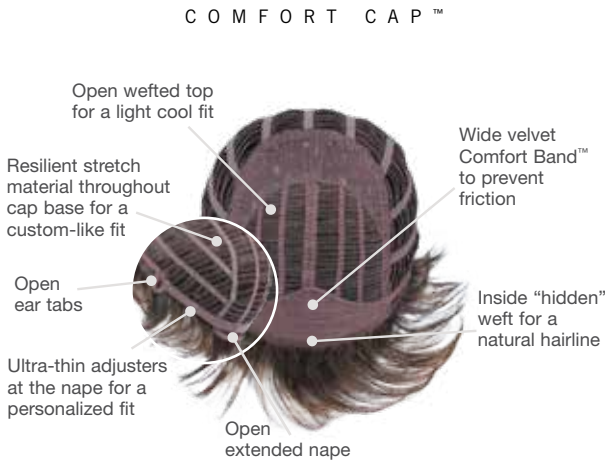
With its wispy texture and multitude of razor-tapered layers, this short silhouette has beautiful movement and lift. Gentle waves throughout flatter a variety of face shapes. Wear this versatile cut smooth and slick or fluff up the flipped ends.



Front 4" | Crown 4 ½" | Sides 3 ¼" | Back 3 ¼" | Nape 2 ¼" | Weight – 2.5 oz.  
Cap Size: Average

**Available colors:** Black, Dark Brown, Medium Brown, Light Brown, Brown/Blonde, Dark Blonde, Medium Blonde, Light Blonde, Light Red, Medium Red, Brown Grey, Light Grey (Shown in Brown Grey)

*Suitable for Oval, Round, Square, Diamond, Heart & Pear face shapes.*



NEW!

S P I R I T

*Gentle, nourishing and specially formulated for*  
**SYNTHETIC OR HUMAN HAIR**



**CLEANSE:**  
This luxurious, PH balanced shampoo provides weightless moisture and shine, and gently cleanses away styling product buildup. Formulated to neutralize odors from wear with a fresh, light fragrance. (8 oz..)



**RESTORE:**  
Both a detangler and protectant, this dual purpose formula nourishes synthetic fibers providing the all-day softness of a leave-in conditioner, and can also be used as a protectant when styling heat-friendly synthetic fiber. (8 oz..)



**CURL:**  
Revitalizes curly or wavy wigs and hairpieces. Use after shampooing to bring back the style's original curl, or mist onto dry hair to refresh the style before wearing. A light hold setting spray. (8 oz..)



**SHAPE:**  
A medium hold spritz designed to give short or mid-length wigs a soft flexible shape. Use to create spiky or piecey textures. An ideal alternative to aerosol styling products. (8 oz..)



**CONTROL:**  
A strong hold finishing spray that you control. Variable spray settings let you choose the level of hold to customize your hairstyle. Special event? Rainy weather? Get Control for the perfect hold without sticky buildup. (10 oz..)



**TRAVEL KIT:**  
Includes 3.4 oz.. bottles of Cleanse, Restore and Shape. Meets TSA standards.

*Hair Care Products*  
by **H A I R U W E A R®**

HairUWear hair care products are environmentally safe and contain no animal products. Absolutely no animal testing involved.

**H A I R U W E A R®** ACCESSORIES



**WIDE-TOOTH COMB**  
Recommended for today's silhouettes, the HairUWear® styling comb will not damage fibers or generate static electricity. The wide plastic teeth are designed to provide the "finger styling" effect that is so popular among today's top celebrity stylists.



**1" STYLING BRUSH**  
The narrow design allows for brushing a few strands at a time for styling control and the "tail" can be used to tuck stray hair under the wig. Stainless steel, ball-tipped bristles are designed to comb through synthetic wig fiber without damage. Will not stretch or pull the fiber like regular hairbrushes.



**OVAL WIRE BRUSH**  
Stainless steel, ball-tipped bristles are designed to comb through synthetic wig fiber without damage. Will not stretch or pull the fiber like regular hairbrushes. Lifts or smoothes fibers to make styling a breeze!



**PIC-COMB**  
Designed for easy teasing or removing snarls, this comb won't split wig fibers. The long metal prongs are for lifting, fluffing, or smoothing.



**WIG SAVERS**  
Perfect for drying, storage, or travel, this stand keeps a wig fresh and ready to wear. Made of sturdy, lightweight plastic, it snaps apart and lays flat for travelling ease. Allows air to circulate for quick drying.



**GABOR® ESSENTIALS™ COLOR RING**  
Take the guess out of choosing the correct color for your client with Gabor® Essentials™ Color Ring.



**WIG CAPS**  
Made of washable, stretch nylon, this light and cool wig cap lets the wearer feel confident that her own hair is securely held under the wig with no revealing wisps showing. The cap also prevents wig slippage. One size fits all.



**CHIN STRAPS**  
Adjustable for a secure, comfortable fit, our fix-a-fashion chinstrap holds your wig in place for styling ease. Made of an elastic strap with chrome clips, it leaves both of your hands free for easy styling.



**UNBREAKABLE FASHION MANNEQUIN HEADS**  
Smart and chic, these unbreakable heads are hand painted to provide the perfect display for any wig. Available in 14" & 21" sizes, each head includes a slat wall attachment for free standing or slat wall display.



**NEW! FIBERGLASS FACELESS MANNEQUIN HEAD**  
Reflecting the latest trend in mannequin design, this abstract faceless 18" fiberglass head includes a slat wall attachment for free standing or slat wall display.

FOR PROFESSIONAL USE ONLY



**HAIRUWEAR® STEAMER**  
For professional use only, this steamer is ideal for restyling synthetic and human hair wigs and hairpieces. Both easy to use and lightweight in design, this compact and portable steamer features a 4.7 oz.. water reservoir for extended steaming time. 850 watts / AC 120V / ETL listed. Instructions included.

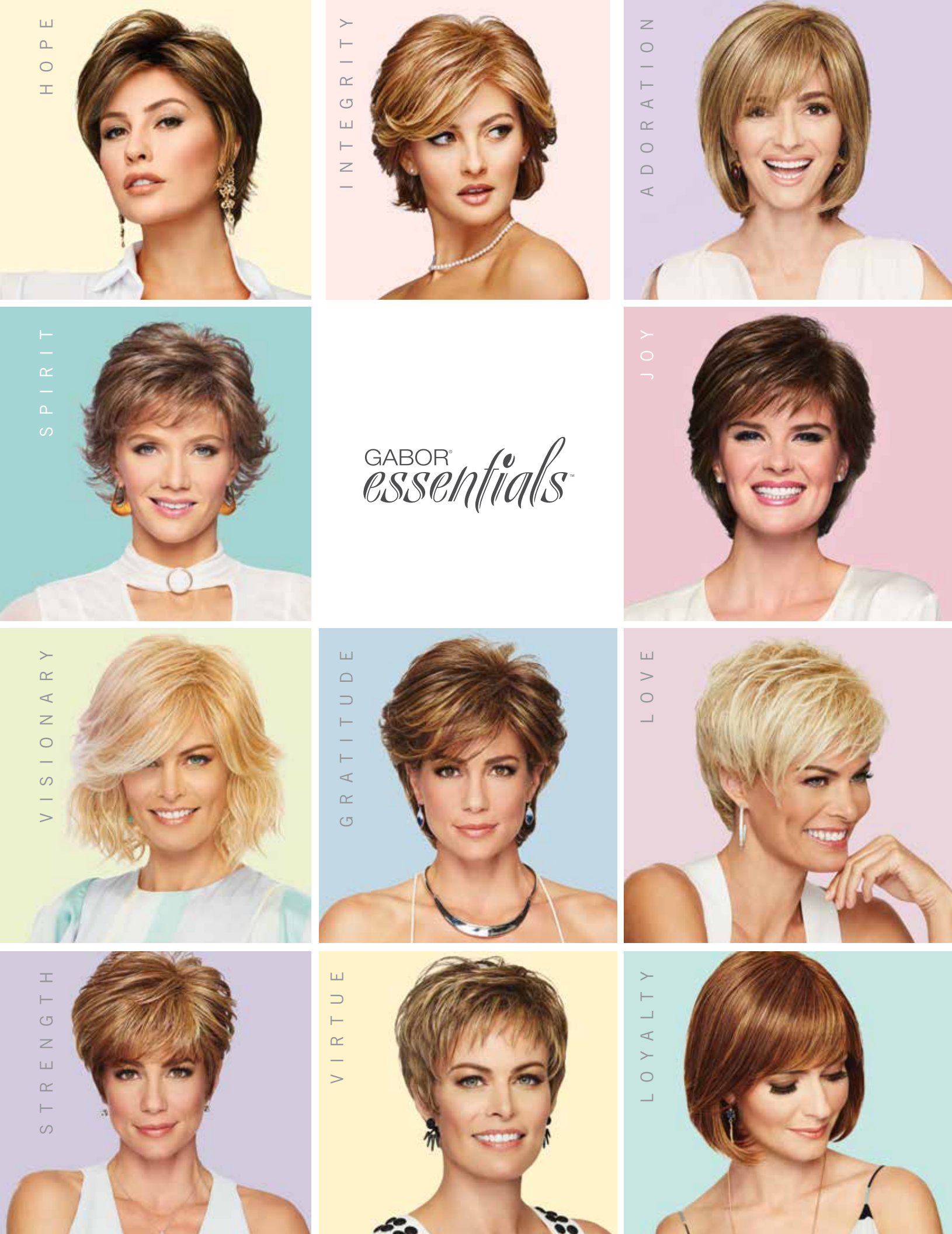


**HAIRUWEAR® SHEARS**  
These high-quality cutting and texturizing shears are ideal for customizing synthetic and human hair wigs and hairpieces without dulling your expensive shears. Use the cutting shears (A) to adjust the length or simply to frame your client's face. Use the texturizing shears (B) to reduce density or add volume to your client's wig. Purchase individually, or as a money-saving pair!



**HAIRUWEAR® TAPE MEASURE**  
Convenient, easy-to-hold flexible tape measure to ensure the perfect fit for your client's wig. Double-sided tape includes inches and centimeters.





# GABOR® ESSENTIALS™ COLORS

All Gabor Essentials styles are made with HairUWear's exclusive Excelle™ fiber. This soft, natural-looking, 100% polyester fiber can be heat-styled to achieve just the look you want.

		
Black	Dark Brown	Medium Brown
		
Light Brown	Brown/Blonde	Dark Blonde
		
Medium Blonde	Light Blonde	Light Red
		
Medium Red	Brown Grey	Light Grey

Kanekalon®  
**EXCELLE**  
HEAT-FRIENDLY  
SYNTHETIC HAIR

Pictured colors may vary slightly from the actual color.

HAIRUWEAR.COM/GABOR